

## BUYING OR SELLING A HOME?

### What to do about PROPANE



#### INSIDE THIS ISSUE

Alfalfa Management  
2021 Scholarships  
Navigating Propane Market  
Premium Diesel vs. #2 Diesel  
Commodity Super Cycle  
Fungicides for Plant  
Disease Management  
4 Tips for High Mileage Cars  
'On the Radar' Coming Soon!

**Wisconsin's housing market has been bustling with activity over the past year. A shortage of homes for sale and very low interest rates have only added fuel to the frenzy. All the activity has kept our LP department very busy with tank ownership changes, new customer applications and new tank sets.**

Moving is a stressful time, and it's easy to get bogged down in details. But don't worry, Allied Cooperative is here to help you through the transition. Director of LP, Dianne Dallmann, offered some advice on what you should know if you are buying or selling a home, specifically when it comes to propane. "If you're buying a home, the first thing you want to do is determine who owns the tank." Often times people think they own their tank, but tank ownership is actually rather rare. Most tanks today are leased through the propane suppliers.

"Look under the lid," said Dallmann. "Most of the time you will find a 'property of' sticker under the lid. You can also ask who the homeowner purchased propane from previously. Once you determine who their supplier is, give the supplier a call to verify ownership."

Next, complete the account application process to purchase propane from Allied Cooperative. When you do that, we will perform a safety check to ensure that the equipment is safe for operation and up to code."

If it is a leased tank, customers will be asked to complete a lease agreement with Allied. One of the advantages of having a leased tank is that Allied maintains all equipment on the tank at no charge to the customer. This includes first stage regulators, piping, all valves and painting the tank if necessary.

"If you are selling your home and are currently purchasing propane from Allied, contact one of our offices and have

*Continued on page 7...*



## ALLIED COOPERATIVE LOCATIONS

### ADAMS

#### ADMINISTRATION OFFICE / LP GAS / FUEL

540 S Main St • PO Box 729  
Adams, WI 53910  
608.339.3394 / 800.247.5679  
www.allied.coop

#### AGRONOMY / GRAIN

251 Railroad St Adams, WI 53910  
608.339.3698 / 800.331.3073 (Agronomy)  
608.339.0357 (Grain)

#### CENEX PUMP 24

451 S Main St Adams, WI 53910  
608.339.3626

#### NAPA AUTO PARTS

540 S Main St Adams, WI 53910  
608.339.6412

### ARCADIA

#### OFFICE / LP / FUEL / OIL

N28281 State Rd 93 Arcadia, WI 54612  
608.323.3311

#### AGRONOMY / FEED

245 Van Buren St Arcadia, WI 54612  
608.323.2144 (Agronomy)  
608.323.3818 (Feed)

### BLAIR

#### EAST GRAIN PLANT

1015 E Broadway St Blair, WI 54661  
608.989.2298

#### WEST GRAIN PLANT

420 N Park Rd Blair, WI 54661  
608.989.2335

### GALESVILLE

#### AGRONOMY

W19801 Winnebago Rd  
Galesville, WI 54630  
608.582.4711

### MAUSTON

#### AGRONOMY / FEED / GRAIN / TRANSPORTATION

N3709 Townline LL Rd  
Mauston, WI 53948  
608.847.6006 (Agronomy)

608.847.6896 (Feed)

608.847.5212 (Grain)

608.847.1642 (Transportation)

#### MAUSTON TIRE SHOP / NAPA AUTO PARTS / SAFETY & COMPLIANCE

310 Prairie St Mauston, WI 53948  
608.847.1640 (Tire Shop)  
608.847.7501 (NAPA)  
608.339.3394 Ext 320 (Safety)

### MINDORO

#### MINDORO COUNTRY STORE

N8319 Cty Rd C Mindoro, WI 54644  
608.857.3414

### PLAINFIELD

#### PEST PROS

10086 1st St Plainfield, WI 54966  
715.335.4046

### PLOVER

#### AGRONOMY

4809 Monroe Ave Plover, WI 54467  
715.345.1955 (Office)  
715.498.2767 (Cell)

### TOMAH

#### DOWNTOWN OFFICE / LP

#### TOMAH COUNTRY STORE & FEED

711 Fair St Tomah, WI 54660  
608.372.2458 / 800.338.6624

#### AGRONOMY / GRAIN

10533 Estate Rd Tomah, WI 54660  
608.372.2090

### WEST SALEM

#### OFFICE LP GAS / FUEL / ACE HARDWARE

570 Commerce St  
West Salem, WI 54669  
608.786.1100 / 800.657.5189  
(Office/LP/Fuel)  
608.786.4141 (Ace Hardware)

#### AGRONOMY / GRAIN

165 S Mill St  
West Salem, WI 54669  
608.786.1103 (Agronomy)  
608.786.4154 (Grain)

### WISCONSIN RAPIDS

#### GRAIN PLANT

3990 Commerce Dr  
Wis Rapids, WI 54494  
715.423.3000

If you would like to be removed from our mailing list, or you have received duplicate copies of this newsletter, please call the Administration Office listed above, or email [info@allied.coop](mailto:info@allied.coop).

## A LETTER FROM OUR CEO



The past year was unprecedented in its impact on business operations, the economy, and our daily lives. Finding ways to serve customers with minimal disruption while keeping our team engaged, productive and healthy—both physically and mentally—has been challenging to say the least.

It is the tough times that test a company's culture and values. And though we have been tested, I am proud of the way our team has responded. Regardless of the stress of the pandemic, our team has showed up day in and day out, despite the risks, interacting with the public and doing all they can as essential workers to ensure that the work of the cooperative continues.

At Allied Cooperative, we created very clear protocols for in-facility masking and social distancing. We adapted and learned how to move forward. As a result, even though we have had some team members that tested positive, we have had no community spread within the co-op and as a whole we have remained relatively healthy.

Allied was strong heading into the pandemic, we are strong today, and we will be strong in the future. The co-op's business performance throughout 2020 and the first quarter of 2021 were remarkable given the circumstances, and we are on track for what I believe will be another successful year.

We look forward to sharing our accomplishments with you at our annual meeting on June 29th at the Cranberry Country Lodge in Tomah. As we continue to abide by state and local guidelines, members are encouraged to attend the meeting in-person with social-distancing protocols in place or on-line in a virtual format. If you are unable to make the meeting, please feel free to stop by one of our office locations after the meeting to pick-up a copy of our annual report.

Wisconsin's COVID metrics have been mostly flat for the past several weeks and we are hopeful that they will begin to decline with active vaccination campaigns and people spending more time outdoors. I know we all want things to return to "normal"; in other words our old ways of doing things. That may not be entirely possible, but it is possible that we will learn a few things from our pandemic experiences and improve as a company and individuals.


Thank you for the opportunity to serve you. We appreciate your continued patronage and look forward to healthier days ahead!

Sincerely,

Timothy Clemens, CEO







Largest potatoes  
in Missouri on  
April 26th.

# Pest Pros Scouts Missouri Potato Crop

**For almost 35 years**, Pest Pros has been scouting potato fields near Charleston, Missouri during April and early May. "We are following Wisconsin potato growers to Missouri," said Matt Selenske, Pest Pros Manager. "Missouri growers typically start planting the first week of March, and are growing potatoes for the 4th of July market potato chip market. We scout over 3000 acres."

The department scouts the fields three days a week for six weeks in a row. It's a difficult pace. All of the fields are walked. "We really hammer it," said Matt. "You would never be able to do it all summer long. We're talking extreme workout boot camp."

The crew finishes up scouting the Missouri crop just in time to put their expertise to work in the Wisconsin fields. Yields are not quite as good in Missouri, because potatoes are a cooler weather crop. "We're in essence cheating Mother Nature," said Matt. "Potatoes need to be harvested in June or mid-July. Very seldom can you harvest potatoes in late July, because they just melt in the ground." They do find that while there is less beetle pressure in the area, there is lot of nematode pressure.

For more information on Allied's scouting programs, contact your agronomy advisor or Pest Pros at (715) 335-4046. ■

## Alfalfa Management



**by Marilyn Whalen**  
Agronomy Advisor

**It's hard to believe  
we are here again ...  
harvesting first crop alfalfa.**

After first crop is prime time for a fertility pass. Potash is the most important item on the list. Just like our row crops, potash is essential for plant vigor, protein and sugar production, water and nutrient uptake.

If your yield goal is 5 ton or more you need to apply 400 pounds of Potash during the season. Aspire® is another potash product, with sprayed on boron, and is also a good choice to make up a percentage of your mix.

Phosphorus is another important part of the fertility program. Phosphorus is essential for root health, plant vigor, photosynthesis and carbohydrate production. Last year, I learned while trouble shooting a new seeding field the importance of phosphorus. (See the

picture below.) The only difference is the phosphorus levels. Check your soil samples and add accordingly. Sulfur is also important, especially in lighter ground. Sulfur is essential for protein production.

Last year many growers commented, "I wish I would have sprayed

*Continued on page 7...*





# Propane Market Volatility—What you need to know



by Dianne Dallmann  
Director of Propane

**Wow, what a ride!** That's what came to mind as the 2020-21 propane season drew to its official end. But the excitement and uncertainty isn't over yet, folks. Not by a long shot. Propane exports are still running sky-high; end-of-season inventories are at the low end of the five year average.

U.S. marketers and mid-streamers (or those who store, process and transport petroleum products) are not encouraged to rebuild stocks. I get it—no one wants to think about next winter yet. But still you've got to wonder, could the dynamics that have been roiling the propane market be setting us up for skinny inventories and price spikes in the 2021-22 propane season?

The U.S. propane market is poised for another period of intense volatility, due to competition between international and domestic markets as exports compete with supplies that would otherwise be replacing inventories drawn down during the 2020-21 propane demand season.

For inventories to grow back to comfortable levels, some volumes that would otherwise be exported would instead need to be used to replenish stocks, which implies high U.S. prices relative to international markets. The catch is that the use of propane supplies to fully rebuild stocks must make economic sense, and that assumption is open to question. There is little economic incentive for U.S. marketers and mid-streamers to build inventories, other than the usual seasonal/operational considerations.

With all of this in mind, from a consumer perspective, the best way to avoid potential spikes during the winter season is to protect your price during the summer. There is no reason to panic—but planning ahead can make a real difference in your pocketbook. Allied Cooperative has programs designed to fit your budget. When you receive your prepay/budget brochure in the mail, call us and one of our customer service representatives will help explain our various programs to and help you find the one that best fits your needs. ■

## Is it Time for New Farm Tires?

**Farm equipment is a huge investment.** From combines to manure spreaders, large work vehicles account for some of the biggest expenses any farmer encounters.

To ensure your operations run smoothly and to protect your farm budget, keeping tractors in good condition is very important. Without proper maintenance, farm equipment simply won't last as long, which costs you more money in the long run.

An important part of good tractor maintenance is properly caring for tires. Older tires with worn tread can cause the tractor to perform poorly, resulting in inefficient work and higher expenses. Poor tires lead to fuel waste as your equipment has to work harder to compensate for bad traction.

To prevent issues like this, replace tractor tires when the time is right. Here are three common signs that your tractor tires need to be replaced:

**Dry Rot** Like any tire, tractor tires can develop dry rot. As the seasons and conditions change, the composition of tire material changes, too. When a tire has been over-exposed to sunlight or dry air, or when a tire hasn't been used very much, it can lose elasticity and develop cracks. This phenomenon is known as dry rot. If you notice that your tires have become brittle, pale, faded, or cracked, you may need replacements.

**Air Pressure Problems** Like a bike tire or car tire, large tractor tires can also develop air pressure problems. Tires that aren't filled to the ideal pressure will not perform correctly, resulting in fuel waste and improper load management. If you notice that your equipment's tires constantly need to be



filled, you may have a slow leak. When tire air problems become a constant battle, consider purchasing replacements.

**Wheel Slippage** Finally, wheel slippage is related to traction and refers to how far the tractor actually moves as the wheel turns. Today's tires have slip indicators that help operators recognize when a tractor has good traction, and when the machine is sliding and failing to grip the ground. An experienced driver will also be able to feel when a machine is struggling to gain traction on mud and wet soil. Wheel slippage can be costly over time, since the machine burns more fuel to move across the ground. If you suspect your tires have slippage problems, it might be time to get them replaced.

Tires are one of the most important parts of a tractor. The air in each tire bears the weight of every load, and the tread is responsible for pulling that load over all kinds of terrain. To keep your equipment in top condition and to keep your farm running smoothly, replace tires when the time is right. In so doing, you'll be able to rely on your equipment to get the job done.

For more information on Allied's farm tire service, call the Mauston Tire Shop at (608) 847-1640. ■





## Cenex® Premium Diesel Fuel vs. #2 Diesel

**Why ??? I'll tell you why ...**

**Why do you spend so many hours researching before buying a new piece of equipment?**

To make a wise investment.

**Why do you change your oil on regular intervals?**

To protect your investment.

**Why do you build a shed/shop to store your equipment?**

To protect your investment.

**Why burn the cheapest fuel you can find in your equipment???**

Cenex® Premium Diesel Fuel contains a top-of-the-line additive package to protect your equipment and optimize performance. It is proven that compared to regular #2 diesel, Cenex® Premium Diesel Fuel gives you up to five percent more horsepower, five percent less fuel consumption, and reduced maintenance cost. Five percent less fuel consumption alone can save \$0.10 a gallon on total fuel cost.

**How does it do that, you ask?** It's all in the additive package. The strong detergents keep the injectors clean, prevent carbon build up from incomplete burns, and keep filters looking like new. That is only one of seven of the premium additives in the Cenex® Premium Diesel Fuel package that work together to make your equipment run it's best.

**So why use Cenex® Premium Diesel Fuel?** To protect your investment.

Why Allied Cooperative? Because we care. ■



**Russ Bortz**  
608.780.8614



**Rich Karpinski**  
608.403.1178

by Rich Karpinski,  
Energy Specialist



## Aquafighter *the silent janitor*

**Wouldn't it be great to have an employee that worked for you 24/7 365 days a year with very little wages?** Well, Aquafighter (shown above) is that kind of employee. Aquafighter works non-stop on removing water from your diesel tanks.

Water in equipment can cause breakdowns and costly downtime. An Aquafighter filter is designed to be lowered into the fuel barrel, absorb any water and be pulled out when it turns pink indicating it is full.

Made from high-tech, water absorbing material, Aquafighter can collect up to 500 times its own weight. ■

Aquafighter	Water Capacity
Snake filter	1/2 liter water
Canvas med	2.5 liter
Canvas large	1.25 gallon
Anaconda	1.5 gallon
TW Anaconda	3.0 gallon

**Please contact Allied Cooperative's Energy Division for more information.**

**Jeff Bunker**  
**Director of Refined Fuels**  
608.786.1100



# WILL THE COMMODITY SUPER CYCLE CONTINUE?



by Rich Dahlke,  
Grain Merchandiser

## Most of us involved in production agriculture can easily see what is happening in the commodity markets.

We simply have good demand for commodities with relatively small inventories. In this situation it is the markets job to find a price that will ration demand and spur increased production. The U.S. grain producer has always stepped up in short order in these situations. That is why \$7 corn doesn't seem to last. Many celebrate \$7 corn but some of us that have been around awhile agree that it is not always a good thing. ( Send me your hate mail now). Corn producers are losing customers. Cows don't eat \$7 corn. Ethanol plants and my car doesn't like it either.

Since late last year its been one bullish headline after another adding to the volatility and decreasing

the ending stocks of grain. The May USDA report put the brakes on that by increasing the ending stocks slightly. The market responded negatively. This tells me one thing. We need more bullish news to see new highs. The recent rally has done its job addressing the bullish fundamentals so now we need to be a bit more cautious. There are still a long list of bullish things that can happen. Weather being the biggest concern. We need a big crop from the U.S. and with the dryness returning in many areas, the world is watching.

But what if these bullish things don't happen. We are starting to see Chinese shipment cancellations. Argentine corn is cheaper than U.S. corn. Some quite large yield estimates are being tossed around. Dry areas to the west have seen some rain. It's still dry, but any rain is not bullish. Brazil has also seen some needed precipitation. The June report will address acres again. I'll bet corn and bean acres will only get larger from here. How much larger remains to be seen. I am still optimistic for grains longer term. If we do have a good crop and a few more acres the demand is there. But, please remember. There are also things that can stifle this rally and we need to watch them. I don't know when the party will be over but I do know it will be too soon for many of us. Make some sales and be thinking about new crop 2022 also. ■



## Allied Cooperative invites all members to attend our 2021 ANNUAL MEETING

When: Tuesday, June 29th, 2021

Time: 11:00 a.m.

Where: Cranberry Country Lodge, 319 Wittig Rd., Tomah, WI

### THERE ARE TWO OPTIONS TO ATTEND

#### OPTION ONE

##### TO ATTEND IN PERSON:

RSVP to [info@allied.coop](mailto:info@allied.coop) or call Karmen at 608-339-3394, ext 2225 by 06/24/21



We are continuing to follow recommendations of the Center of Disease Control and our state and local health departments. So that we can make the necessary accommodations and plan for food, we ask you to contact us if you plan to attend the in-person meeting. Watch our website for any further changes that may need to take place.

#### OPTION TWO

##### TO ATTEND ONLINE:



For the safety and convenience of our members we will be have a live stream of our meeting online. To register for the online meeting, go to [www.allied.coop](http://www.allied.coop) and follow the prompts on the main page. Deadline to register for the online meeting is 6/28/21 at 5:00 p.m.



# SAFETY IS VERY IMPORTANT TO ALLIED COOPERATIVE

We send out letters annually to customers when their propane equipment is due for a regulator change or safety inspection. If you get a letter from our office to set-up a safety check, please contact our LP department. We will do our best to make the process as simple as possible for you, but ensuring our equipment is operating safely and correctly is a number one priority for us.

The State of Wisconsin requires that a person who owns, leases or uses a propane gas system and who is a customer of a retail supplier shall notify the retail supplier of propane gas of any interruption in the operation of the propane gas system. Examples of an interruption of service, include:

- Planned repair, replacement, addition to, removal of, or service to propane gas piping or pipe fittings; pressure regulators; or replacing devices that use propane, such as a stove, furnace or hot water heater.
- Emergency repair, replacement or servicing of propane gas piping or fittings; pressure regulators; or replacement of devices that use propane, such as stove, furnace or water heater.
- Running out of propane gas for any reason.

As always if you smell propane, contact Allied Cooperative's LP department immediately. Our technicians are on call 24/7, 365 days a year.

## Propane

*Continued from page 1...*

us put your tank on hold if you don't want any more deliveries while the sale is in the process. You would then need to keep an eye on your own tank to ensure you have enough fuel to make it until your closing date" said Dallmann. "You could also leave your tank on scheduled delivery, as long as you are aware that a delivery could take place."

"Once you know the closing date, call us to ensure nobody else charges on that account," added Dallmann. "If you're an Allied customer and are leasing a tank from us, you will want to inform your realtor that the tank belongs to Allied. Then if the new home owner calls our local office we can help with all the paperwork necessary to change the tank into their name." ■



## Alfalfa

*Continued from page 3...*

for bugs." Leafhoppers are yield robbers—be proactive. When you see the symptoms it is too late to spray. Especially if you have your own sprayers—for a couple of dollars you can protect your crop. This trip is also a great opportunity to add boron and fungicide.

First and second cuttings have the largest yield benefits from fungicide applications. Data shows a 6% to 13% increase in yield on first crop and 2.5% to 10.5% increase in yield on second crop with fungicide application. The value of fungicide application will increase as cutting is delayed. At a fungicide application cost of \$15/acre, there is a

positive return on investment as the value of hay increases (\$80/ton to \$200/ton value) especially on first and second cutting.

Our interns are on board to help scout fields, tissue sample, soil sample and bug sweep. We are here to help! ■



## Leafhopper





# Fungicides: Important for Plant Disease Management



**by Izaak Rathke,  
Director of Sales**

**Gray leaf  
spot on  
corn.**



## **WOW! How things have changed as far as commodity pricing goes as of late.**

Last fall, and even early this spring, growers were questioning what crop to plant to lose the least amount of money or at a minimum break even. Now we are looking at record profits again.

With very thin margins the past few years, a lot of yield boosting products have been left on the shelves. Micro-nutrients, fungicides, even fertilizer programs have been scaled back the past couple years due to low pricing. In reality we should always be pushing for the maximum yield in good times and in bad. Yield is ultimately your deciding factor whether you're going to make money or not, so why not protect that investment?

Allied Cooperative will have a helicopter available again this year to spray fungicide and micro-nutrients. Foliar fungicides have proven to be an effective way to help protect corn yield by managing foliar diseases. Many research studies have shown significant yield increases when fungicides are applied between tasseling (VT) and brown silk.

Treating field corn with a fungicide has become a common practice in the Midwest. With several fungicide programs and formulations, and the re-emergence of yield limiting corn diseases like northern corn leaf blight (NCLB), gray leafspot (GLS) and the yield robbing newest threat tar spot -- foliar fungicide application has demonstrated an ability to reduce foliar disease severity and increase grain yields.

You will want to scout your fields or have them scouted up to the point of application to determine what diseases you have, and what product you want to use to control the disease. If some foliar disease symptoms are present in the lower canopy, make a visual estimate of how frequent the disease is in a particular area and how severe it is (how much of the plant leaves are covered with lesions).

The lower leaves aren't responsible for much yield accumulation in corn, but they do hold nutrients to feed the upper part of your plant and spores produced from NCLB, and GLS lesions on the lower leaves can be splashed up to the ear leaves where disease can be very impactful. So by scouting the lower canopy and getting an idea of how much disease is present you can predict the severity and make a decision on when and what fungicide to spray.

Most seed companies now have a (resistance rating) on their hybrids. This will tell you the resistance of said diseases, and which hybrids will perform the best or worst under high disease pressures. Having a high resistance corn hybrid doesn't mean you don't have to apply a fungicide. You should still scout and determine the severity of pressure in your fields. If you have low pressure and a high resistant hybrid you could forego spraying a fungicide, but if you have high disease pressure you will still want to spray that hybrid.

The higher you push your yields the more important micro and macro fertilizers become, if you are planning a side dress application try to tissue sample your corn before you apply to determine if you have the correct fertilizer and the correct amounts. A (VT) fungicide application is an excellent time to piggy-back micro nutrients. Boron is critical when you start pushing yields of 200 plus bushel corn—Max-in Boron is an excellent choice to partner with your fungicide application.

Lastly, aerial application requires a lot of planning, and mapping so contact your Allied Agronomy Advisor ASAP to get on the list for spraying so they can enter your maps and be ready for the pilot when he gets here. Allied Cooperative is aligned with all the major manufacturers to give you the best options in your fungicide choice. ■



# Choosing the Right Post Soybean Program

It is best to pick your soybean spray program when you decide what soybean seed to plant. With so many post spray options you must be sure what trait package you have and where you planted them, if you have more than one. With weed resistance, the days of just spraying Roundup® are over. All these different trait packages require different adjuvants, boundaries, licenses, etc.

**Below are the major offerings:**

**Roundup Ready 2 Xtend®**

**Xtendflex®**

**Enlist®**

**Liberty Link® GT27TM**

**Liberty Link®**

**Glyphosate**

**Non-GMO**

With all these choices, mapping is extremely important. Your Allied Cooperative agronomy advisor can help you with mapping and choosing the right adjuvants and drift control options. Each of these programs require different adjuvants to maximize efficiency and control drift. You will also want to choose a residual herbicide to tank mix with your plan to ensure season long control. This is just a brief reminder to find out more details and put your plan in motion. ■

**For more information on herbicide recommendations and seed trait selections contact your Allied Cooperative Agronomy Advisor.**



Northern corn leaf blight.



Tar spot on corn.

	Glyphosate	Glufosinate	Dicamba	2,4-D	HPPD
Conventional					
RR	•				
RR2	•				
Liberty Link		•			
RR2 Xtend	•		•		
Enlist E3	•	•		•	
LL GT27	•	•			•
GT27	•				•
XtendFlex	•	•	•		



# Tissue Sampling

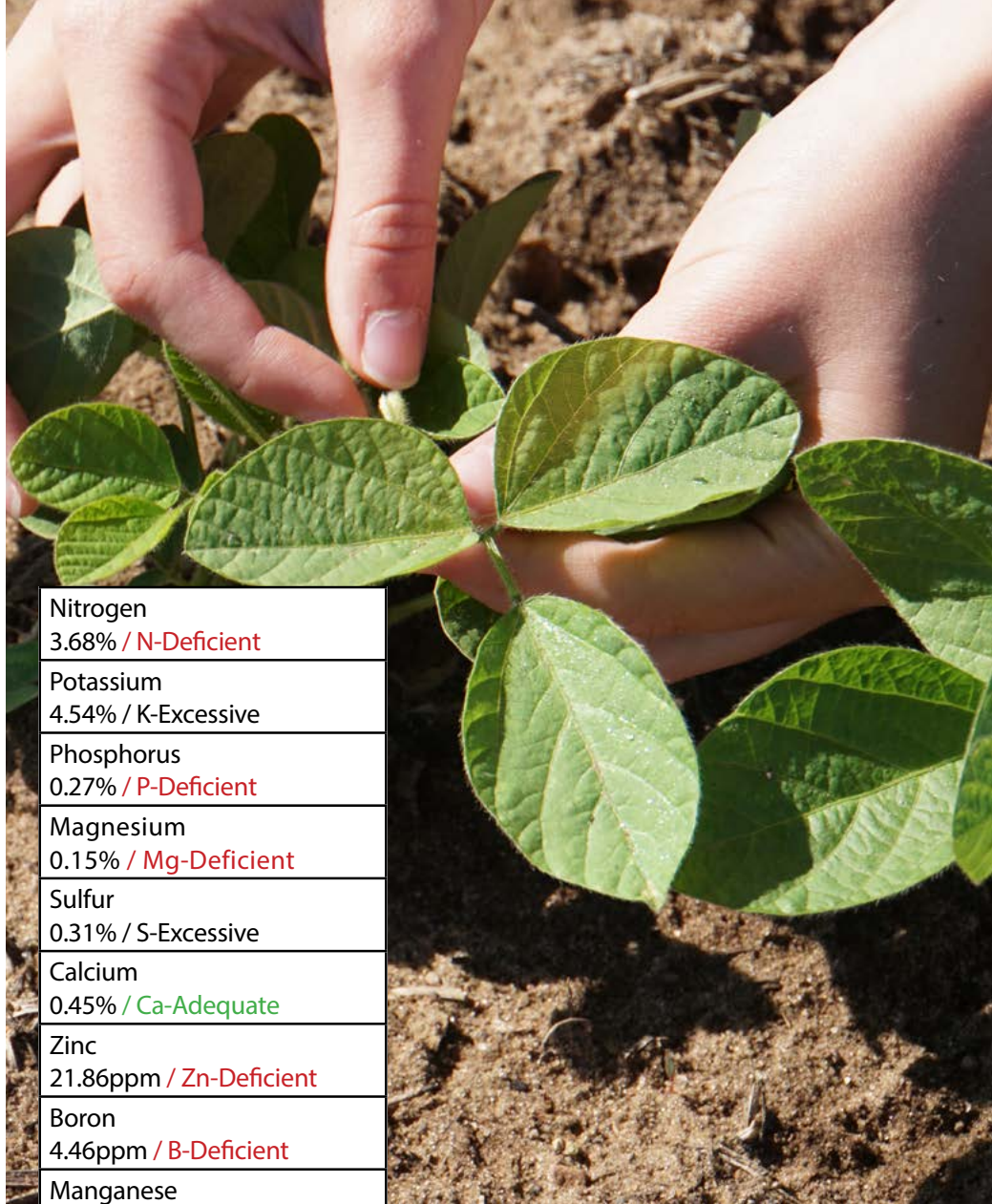


by Pat Cauley,  
Agronomy Advisor

**In-season fertilizer applications will soon begin—before the crop reaches canopy.** Many fertility plans are already in place, but how do you know you aren't missing something critical to ensure stellar yields this fall? By pulling a tissue sample, it will allow you to have a snapshot in time of what the plant is taking up and what it is lacking based on the growth stage. A complete plant tissue analysis will identify the nutrient status of the following: nitrogen, phosphorus, potassium, sulfur, zinc, boron, calcium, copper, iron, manganese, magnesium, and molybdenum.

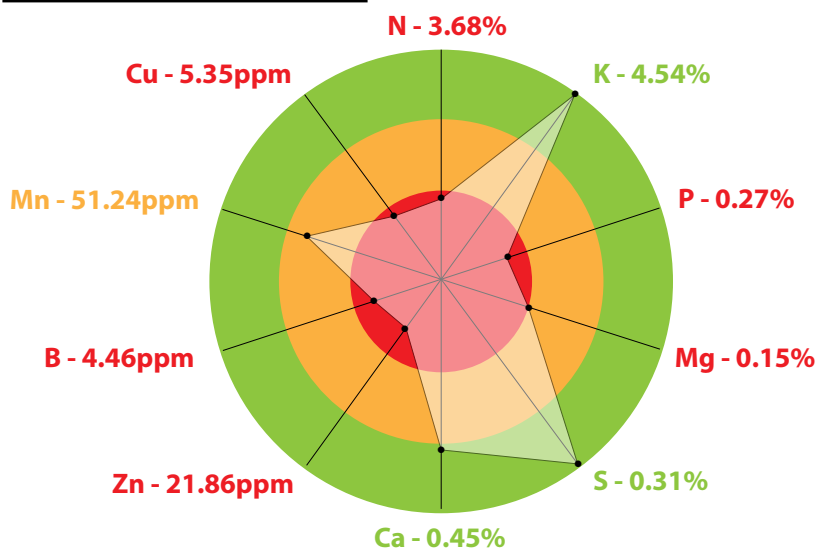
By pulling a tissue sample prior to top-dress, it will allow you to correct any deficiencies that may come back from the lab. There are many different micronutrient products that can also be put in with herbicide and fungicide applications that are foliar absorbed and readily available to the plant.

To pull a sample, you must identify the growth stage of the plant and pull the correct growth to receive accurate results. Although the crop may look healthy, there may be some micronutrient deficiencies that can hinder the final yield. Once you receive your results, you can talk with your agronomy advisor to make the needed changes to ensure a successful yield this fall. ■



Nitrogen	3.68% / N-Deficient
Potassium	4.54% / K-Excessive
Phosphorus	0.27% / P-Deficient
Magnesium	0.15% / Mg-Deficient
Sulfur	0.31% / S-Excessive
Calcium	0.45% / Ca-Adequate
Zinc	21.86ppm / Zn-Deficient
Boron	4.46ppm / B-Deficient
Manganese	51.24ppm / Mn-Responsive
Copper	5.35ppm / Cu-Deficient

Example: Tissue Sample Results



Note: The closer results are to the center of the graph, the more deficient the nutrient.



# 2021 SCHOLARSHIP WINNERS

Allied Cooperative recently awarded 12 - \$1,000 scholarships. Recipients were selected based on their academic achievement, extra-curricular activities, and an essay. Preference was given to students pursuing a degree in agriculture.

Two additional \$500 scholarships were awarded to Bangor High School students as part of the Dennis Nicolai Memorial Scholarship – a scholarship fund set up to honor long-time employee Dennis Nicolai who worked in our West Salem agronomy department.



**Brooke Clark** Mauston, WI  
**Tristan Flyte** Coloma, WI  
**Elaine Groth** Mindoro, WI



**Rylee Guajardo** Lyndon Station, WI  
**Dustin Heitkamp** Mindoro, WI  
**Abigail Helbach** Amherst, WI



**Dresden Lambert** Fountain City, WI  
**Ryland John Pronschinske** Arcadia, WI  
**Connor Schyvinck** Lyndon Station, WI



**Hailey Sonsalla** Arcadia, WI  
**Ivey Wadman** Vehrenkamp Galesville, WI  
**Gracie Walker** Wisconsin Dells, WI



**Ethan Hemmersbach\*** Bangor, WI  
**Elizabeth Glandt\*** Bangor, WI

**WE  
CONGRATULATE  
ALL OF THIS  
YEAR'S  
WINNERS!**

**\*Dennis Nicolai Scholarship Winners**





# SAFETY CORNER

By Dawn  
McCluskey  
Director of  
Safety &  
Compliance



## Keeping our Children Safe Protect the most important thing you'll ever raise.

**Farms are a wonderful place for children to live, work and play, but they are also one of the most dangerous worksites in the U.S.**

With school out, our children are home for the summer. Before you start to tackle your summer to-do list, take steps to keep the kids on your farm safe. Farm-related injuries occur while children are both at play and at work. Parents and grandparents should use precautionary safety measure to prevent accidents by setting and enforcing safe limits as well as being good role models.

According to information from the National Children's Center for Rural Agricultural Health and Safety, a Marshfield, Wisconsin research center, approximately three children die from an agriculture-related incident and another 33 are injured on farms each day. The definition of "injured" is a serious enough injury to be out of commission for more than four hours (more than just a scratch).

### Is everyone aware?

It's difficult, and usually not even a thought, for children to separate their play from farm hazards. To a child, a hay mound, "Fort Central", equipment, and grain bins can be fascinating and adventurous places. However, many of these places have the potential to have a tragic ending.

### Do all you can to make your farm safe for children:

- Keep young children out of the worksite and off equipment (no extra riders)
- Create areas for safe play for young children
- Assign farm tasks consistent with the youth's age and abilities
- Supervise all children and youth who visit, live or work on your farm.
- Learn more at visit [www.cultivatesafety.org](http://www.cultivatesafety.org)

Let farm employees know if your children will be around more often this summer. Everyone who operates machinery should be especially careful to slow down when passing through the farm yard and double check for the children, especially when backing-up.

Take a little time to double-check that hazardous chemicals are stored safely and not accessible to children. Make sure all keys are removed from vehicles and machinery when not in use.

**Stay safe this summer!** For information and resources to prevent child agricultural injuries visit: [www.cultivatesafety.org](http://www.cultivatesafety.org) ■

**Children must be taught how to recognize these dangers and how to avoid them. The following are dangers, on the farm, that should be discussed with children:**

1. Animal behavior
2. Weight and force of grain
3. The harmful gasses released by manure and silage
4. Electricity
5. Chemicals and Pesticides
6. Riding and playing on equipment





# 4 Tips to Keep High Mileage Cars on the Road

Can high mileage cars make it from 100,000 miles on the odometer to 200,000 miles? It's not an impossible dream: modern automobiles are far more reliable, and better built, than they were in the era when seeing 100,000 miles roll over meant it was time to buy a new vehicle.

**With these four basic maintenance tips, you, too, can see your car cruise into the 200,000 mile club.**

## 1. CHANGE YOUR OIL ON TIME, EVERY TIME

Each vehicle has its own oil change interval, which is usually described in the owner's manual. One of the keys to keeping high mileage cars on the road is making sure you don't push past your next oil change. You should aim to hit the garage within a hundred miles or so of the expected interval, or if you haven't been driving all that much, then get the oil changed every six months. This helps keep your engine lubed up and also removes contaminants that collect in the oil over time as the additive pack wears out. Finally, always use the manufacturer recommended grade of oil.

## 2. CHECK YOUR FLUIDS

Oil changes are important, but you also need to regularly verify the fluids in your engine are still doing their job. Every two weeks you should check your oil level, and if it's low, add some to the engine (from the oil canister you should be carrying in your trunk). Once a month, it's also worth checking the coolant level in your radiator, along with verifying the amount of air in your tires and refilling your windshield fluid reservoir.

## 3. YEARLY INSPECTIONS ARE A MUST

Usually, the list of items that need to be replaced on high mileage cars includes suspension bushings, radiator hoses, engine belts, brake calipers, mufflers and sometimes water pumps. Researching what parts of your specific car are known to fail over time can keep you prepared for the inevitable—and a yearly inspection where a mechanic checks out the wear points on your vehicle will make sure it's never a surprise when it does need some preventative maintenance.

## 4. DON'T IGNORE SEEMINGLY SMALL PROBLEMS

Front tires starting to vibrate? Car pulling to one side or the other? Strange noise emanating from underneath the vehicle? A little puddle of fluid in your driveway every morning? Don't ignore it—get it examined by a mechanic you trust as soon as possible. Small problems can blossom into bigger issues as you continue to drive, especially with an older car where components aren't in showroom condition anymore.

Check out all the chemical & lubricant products at the Adams and Mauston NAPA stores. For more information on high mileage cars, stop by and chat with one of our knowledgeable counter people. ■

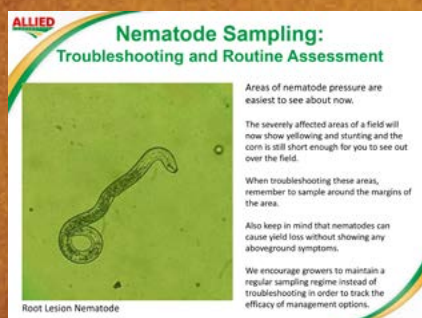
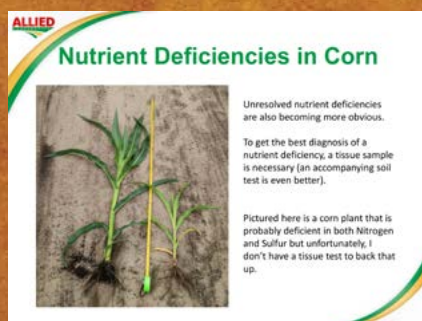






## ON THE RADAR

Each Friday during the growing season, Allied Cooperative publishes an “On the Radar” crop scout report. The report is compiled by our Pest Pros team and is an excellent tool as it gives our growers a look at what our scouts are seeing in the fields on a weekly basis. Check it out on our website at [www.allied.coop](http://www.allied.coop).



## Effective Mosquito Control

The mosquito has been jokingly referred to as Wisconsin's real state bird. God knows there are more mosquitos than robins flying through our skies. Believe it or not, Wisconsin is home to 60 different breeds of mosquitos. It's hard to find a pest quite as pesky.

Allied Cooperative is pleased to offer some great solutions for mosquitos. The Spartan Mosquito Eradicators Pro Tech is a revolutionary product that is the easiest of all mosquito control solutions. One kit treats up to one acre. Simply deploy the eradicators at approximately six feet off the ground within 180 feet of each other, along your property line. The eradicators do not require any chemicals, spraying or electricity. Just add hot water and shake.

Be sure to place them away from where people gather since mosquitoes will gather near the eradicators. Once deployed, the eradicators create a barrier, giving the mosquitoes a target that has the same attractant triggers as people and animals. Once mosquitoes feed on the water solution they perish before they can breed again. The mosquito population in the area will then decrease in 15 days or less and up to 95% of your mosquito population will cease to exist for up to 90 days after installation. The system takes 10 minutes to set-up and lasts up to 90 days.

Other Spartan products include Spartan Go! Spray which features 8 hour, effective protection from mosquitoes and ticks. Both of these products are available at the Mindoro Country Store and Tomah Country Store.

Other mosquito repellent products include Mosquito Beater Granules a pet-friendly granule you shake on your surroundings that provides effective mosquito control for up to three weeks; and Citronella Candles a candle that provides not only mosquito control, but light and ambiance for your outdoor gatherings. Each of these items can be found at the Tomah Country Store. ■







## Be the Grill Master!

Ace Hardware in West Salem is the place to go to pick up everything you need for the ultimate summer grilling season. From utensils to barbecue sauces to grills you'll find everything you to make the most delicious cuisine in your own backyard.

Check out our line of Traeger Grills. Traeger's do-it-all versatility allows you to cook hot and fast or low and slow. From baby back ribs to wood-fired pizza, smokey mac & cheese and even homemade apple pie, anything you can cook in your head, you can cook on your Traeger. And we'll even show you how! Go to [www.allied.coop/grillmaster](http://www.allied.coop/grillmaster) for Traeger grill recipes that will blow your mind! ■

## Plan your Food Plots

Allied Cooperative would like to remind wildlife enthusiasts that it is the perfect time to start planning your food plot. For fall planting, we recommend planting during the month of August or early September. The key is to allow the plants time to grow for at least 30 to 40 days prior to the first hard frost. Allied Cooperative has food plot and wildlife feeding options at several of our locations, including the Tomah Country Store and the Adams, Arcadia, Galesville, Mauston and West Salem Agronomy locations. ■



# 3 Tips to Keep Squirrels Out of Your Bird Feeder

## 1. Squirrel Proof Your Bird Feeder

If you already have a bird feeder up and are seeing frequent visits by squirrels, you may need to reassess your set up. Squirrels are great jumpers, so raise your feeder 4 feet from the ground and at least 12 feet from objects that allow them to leap to your feeders. These "launch pads" include roofs, fences, tree branches, utility lines and even parked cars.

Another helpful feeder add-on is a squirrel baffle. These clear plastic domes are made to block squirrels from climbing up poles or down hanging lines. They're also slippery, so a squirrel that lands on one slips off and falls to the ground.

## 2. Use Thistle or Safflower Seed

You can also change the bird seed you use. Squirrels love sunflower seeds, peanuts and mixed seed, the most common bird food available. They are not fans of thistle (nyjer) seed or safflower seed, which many bird species will eat. Northern Cardinals love safflower seed.

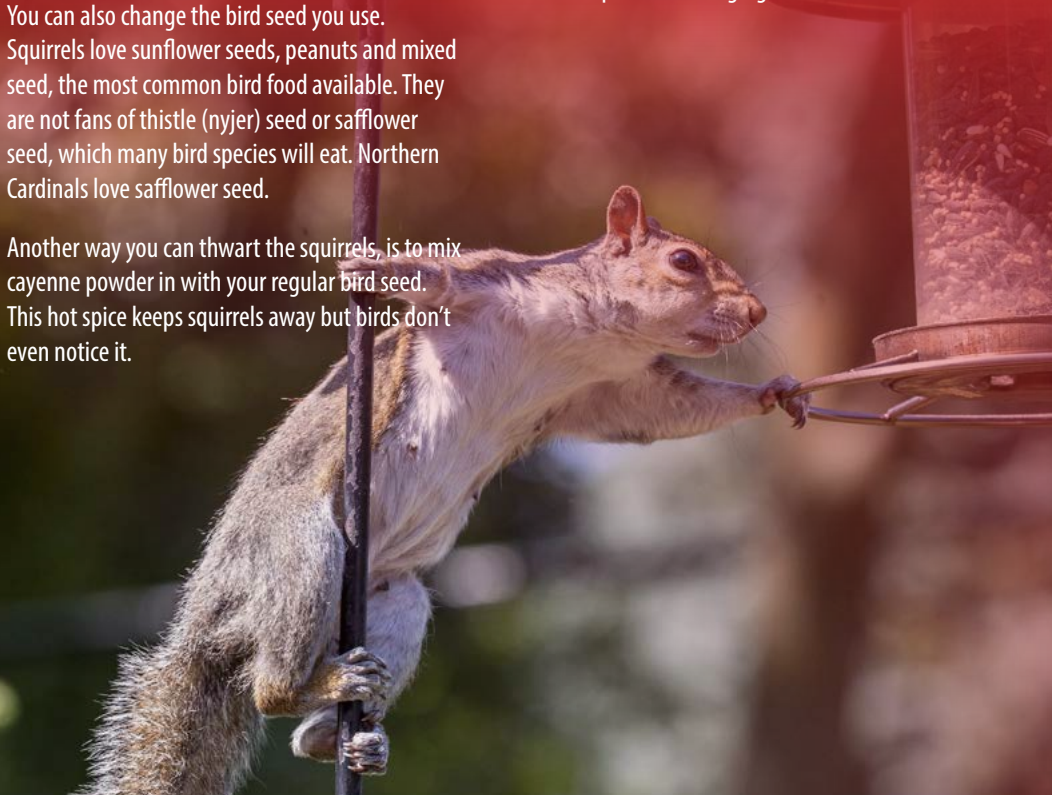
Another way you can thwart the squirrels, is to mix cayenne powder in with your regular bird seed. This hot spice keeps squirrels away but birds don't even notice it.

## 3. Pick the Right Feeder

Look for feeders that include weight-activated shutoffs. These feeders allow birds to feed normally, but when a squirrel climbs on them the trigger activates, and the food is sealed inside until the squirrel leaves the feeder.

Other options include caged feeders, which allow small birds to reach the bird seed, but not squirrels. Some feeders also have built in squirrel baffles or perches that collapse under the squirrel's weight.

Allied Cooperative has an excellent supply of bird seed and feeders available at its retail locations. Stop by our Ace Hardware Store in West Salem, the Adams or Mauston NAPA stores or the Tomah or Mindoro Country Stores for all the supplies you need to keep the birds singing this summer. ■



**TAKE \$5<sup>00</sup> OFF**  
**YOUR PURCHASE OF \$25<sup>00</sup> OR MORE!**  
COUPON MUST BE PRESENTED AT TIME OF PURCHASE. NO PHOTO COPIES ACCEPTABLE.



Coupon expires 8/31/2021

Offer valid only at the following Allied Cooperative locations: Ace Hardware in West Salem, WI; NAPA Auto Parts in Adams, WI and Mauston, WI; and Tomah Country Store, Tomah, WI (excludes all feed). One coupon per customer. Photo copies not acceptable. May not be combined with other offers.





allied.coop

P.O. Box 729 • Adams, WI 53910

## CALENDAR PHOTO CONTEST

Allied Cooperative invites you to enter our 2022 Calendar Photo Contest! We are looking for striking digital images of local scenery, agriculture and nature, throughout all four seasons, to be used in our next calendar. Winners will receive a \$30.00 Allied Cooperative gift certificate and plenty of bragging rights. Please submit your high quality digital photos, as well as your name and contact information, via email to [info@allied.coop](mailto:info@allied.coop). Contest deadline is August 6, 2021. ■



## EMPLOYMENT OPPORTUNITIES

As a large cooperative with six divisions and multiple locations, Allied Cooperative employs a diverse staff in a number of different career fields. If you are interested in joining the Allied Cooperative team, please visit our website at [www.allied.coop](http://www.allied.coop). There you will find a list of current job openings and an application. We look forward to hearing from you!

Allied Cooperative's employees play an important role in our success as a

cooperative. As a cooperative, our core values are teamwork, integrity, dependability, efficiency and service to others. If your values match ours, we'd love to talk to you about career opportunities with our co-op. Come see what Allied can do for you! For a complete and up-to-date list of openings visit [www.allied.coop](http://www.allied.coop). For more information on any of these openings call (608) 339-3394 or email [jobs@allied.coop](mailto:jobs@allied.coop). ■

## BOARD REPORT



Greetings everyone,

Wow what a year it's been. Just 12 months ago we were in the heart of the COVID pandemic and uncertain where our future was headed. Commodity prices began to sink and the outlook was bleak. Our challenges were great. Fast forward one year and what a difference. Vaccinations are flowing and our outlook is much improved. We are off to a great planting season and commodity prices are roaring to new highs. The future looks much brighter!

**John Vehrenkamp,**  
Board Chairman

Allied had many challenges as well this past year. The need to serve our customers was greater than ever and yet the obligation to protect our employees was a top priority. Allied did a great job at both. Management

applied strict guidelines to help protect employees and customers and yet got the job done. Throughout the year Allied kept the COVID virus in check while remaining steadfast, keeping our customers supplied with products and service.

I would like to thank Allied's administration and employees for doing a great job. Keeping Allied going through such difficult times was quite a challenge. Everyone working together, but at a safe distance kept our customers supplied with everything they needed. I would also like to thank all of you, our members, for working with Allied through these difficult times. It was much appreciated.

Now with the pandemic numbers going down and commodity prices going up I look forward to a much better year for all of us. Working together we will continue to grow and succeed.

I'm wishing you all a prosperous, safe and above all, a healthy rest of the year!

## 2021 ANSWER PLOT EVENTS COMING

We are looking forward to hosting some Answer Plot events once again this summer. Please watch our website and your mailbox for more information as plans are finalized. ■

