



ALLIED FLEET KEEPS CO-OP MOVING FORWARD



INSIDE THIS ISSUE

2022 Scholarships
Planning Ahead for LP
Corn - How High Can it Go?
Get Ready for Tar Spots!
2022 Annual Meeting
Free Soybean Cyst and Soil
Nematode Testing
On the Radar

**Rising inflation,
skyrocketing
fuel prices
and changes
in consumer
spending has
resulted in
significant
supply chain
issues
throughout
our country.**

Our ability to rely on our own transportation and efficiently manage our fleet is key as we strive to meet our customers' needs. According to Agri-Pulse, truck drivers move 72% of the nation's goods, on a tonnage basis. That figure is even higher with agricultural products with 83% of products being moved by truck.

With a fleet of 56 semis, the co-op has the advantage of being able to move product quickly and take advantage of

market opportunities as they arise. This saves our co-op money and allows us to control our customer service to the standards we promise.

Recently we upgraded our fleet management system in order to improve overall efficiency. "We changed the computers in all of our equipment and trucks," said Brian Bye, Transportation Division, who headed up the installation process for the new system. "The new system will help everyone be more efficient. The system pulls from all connected assets and centralizes them into one fleet management and tracking

TRUCK
DRIVERS
MOVE **72%**
OF THE
NATION'S GOODS

Continued on page 7...

ALLIED COOPERATIVE LOCATIONS

ADAMS

ADMINISTRATION OFFICE / LP GAS / FUEL

540 S Main St • PO Box 729
Adams, WI 53910
608.339.3394 / 800.247.5679
www.allied.coop

AGRONOMY / GRAIN

251 Railroad St Adams, WI 53910
608.339.3698 / 800.331.3073 (Agronomy)
608.339.0357 (Grain)

CENEX PUMP 24

451 S Main St Adams, WI 53910
608.339.3626

NAPA AUTO PARTS

540 S Main St Adams, WI 53910
608.339.6412

ARCADIA

OFFICE / LP / FUEL / OIL

N28281 State Rd 93 Arcadia, WI 54612
608.323.3311

AGRONOMY / FEED

245 Van Buren St Arcadia, WI 54612
608.323.2144 (Agronomy)
608.323.3818 (Feed)

BLAIR

EAST GRAIN PLANT

1015 E Broadway St Blair, WI 54661
608.989.2298

WEST GRAIN PLANT

420 N Park Rd Blair, WI 54661
608.989.2335

GALESVILLE

AGRONOMY

W19801 Winnebago Rd
Galesville, WI 54630
608.582.4711

MAUSTON

AGRONOMY / FEED / GRAIN / TRANSPORTATION

N3709 Townline LL Rd
Mauston, WI 53948
608.847.6006 (Agronomy)
608.847.6896 (Feed)
608.847.5212 (Grain)

MAUSTON TIRE SHOP / NAPA AUTO PARTS

310 Prairie St Mauston, WI 53948
608.847.1640 (Tire Shop)
608.847.7501 (NAPA)

MINDORO

MINDORO COUNTRY STORE

N8319 Cty Rd C Mindoro, WI 54644
608.857.3414

PLAINFIELD

PEST PROS

10086 1st St Plainfield, WI 54966
715.335.4046

PLOVER

AGRONOMY

4809 Monroe Ave Plover, WI 54467
715.345.1955 (Office)
715.498.2767 (Cell)

TOMAH

DOWNTOWN OFFICE / LP

TOMAH COUNTRY STORE & FEED

711 Fair St Tomah, WI 54660
608.372.2458

AGRONOMY / GRAIN

10533 Estate Rd Tomah, WI 54660
608.372.2090

WEST SALEM

OFFICE / LP GAS / FUEL / TRANSPORTATION /

ACE HARDWARE

570 Commerce St
West Salem, WI 54669
608.786.1100 / 800.657.5189
(Office/LP/Fuel/Transportation)
608.786.4141 (Ace Hardware)

AGRONOMY / GRAIN

165 S Mill St
West Salem, WI 54669
608.786.1103 (Agronomy)
608.786.4154 (Grain)

WISCONSIN RAPIDS

GRAIN PLANT

3990 Commerce Dr
Wis Rapids, WI 54494
715.423.3000

If you would like to be removed from our mailing list, or you have received duplicate copies of this newsletter, please call the Administration Office listed above, or email info@allied.coop.

A LETTER FROM OUR CEO



Most of us have values that guide our daily lives. Whether those guiding principles come from our faith, some advice we received at a key moment, or our own belief of what's important in life. Your cooperative is no different. Several years ago, our Board of Directors established a vision and mission statement that serve as a guide to our co-op. These mission and vision statements are hung in every co-op location and every department as a daily reminder to us all of what our focus should be.

Our vision is to be one of the best agri-businesses by providing an environment for change with future technology, communication, and business practices.

One of the hallmarks of our cooperative, throughout our long history, has been our ability to continually evolve to meet the needs of our members. Our vision statement speaks to that progressive nature. This evolutionary mindset is part of our culture. Amid the many challenges brought on by the pandemic over the past two years, I believe one of the silver linings has been an even greater willingness to embrace change and do what is required to succeed in today's marketplace.

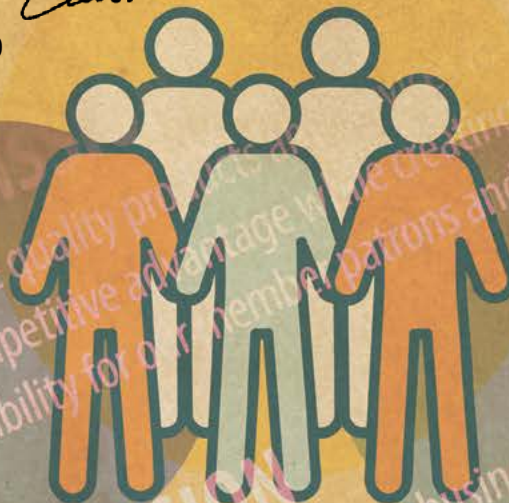
Our mission is to provide quality products and services to our customers at a competitive advantage while creating value and profitability for our member patrons and our cooperative.

This mission is all about you—our members. This cooperative is yours. It was created with a belief that by joining together members could accomplish more than they could on their own. That's why every decision we make is focused on what's best for the farmers who own this cooperative. Whether we're interacting with those we serve while out in the field or answering questions from the office—we are here because of you. We are constantly thinking about how we can create more value for you, our members.

I hope you are proud to be part of a cooperative that makes sure to keep its guiding principles top of mind. Albert Einstein once said, "Strive not to be a success, but rather to be of value." Our goal is to continue to be of value to you. We will continue to keep your needs at the forefront of our business. We appreciate the opportunity to serve you.

Sincerely,

Tim Clemens, CEO



2022 SCHOLARSHIP WINNERS

Allied Cooperative recently awarded 13 - \$1,000 scholarships. Recipients were selected based on their academic achievement, extra-curricular activities, and an essay. Preference was given to students pursuing a degree in agriculture.

Two additional \$500 scholarships were awarded to Bangor High School students as part of the Dennis Nicolai Memorial Scholarship – a scholarship fund set up to honor long-time employee Dennis Nicolai who worked in our West Salem agronomy department.



Lindsey Berg Arcadia, WI
Emily Bittelman Westfield, WI
Shade Bunker Sparta, WI



Kyler Fenske Wautoma, WI
Jaylene Graewin Kendall, WI
Elle Horn New Lisbon, WI



James Hundt Rockland, WI
Tyler Kennedy Amherst, WI
Haley Nevin Wilton, WI



Erica Spinler West Salem, WI
Ty Splinter Friendship, WI
Brett Walker Wisconsin Dells, WI



Nicholus Waughtal Melrose, WI
***Kaitlin Herman** Sparta, WI
***Rebecca Schaub** Rockland, WI
***Dennis Nicolai Scholarship Winners**

**WE CONGRATULATE ALL
OF THIS YEAR'S WINNERS!**

PLANNING AHEAD FOR YOUR LP NEEDS



Balancing your budget can be a real juggling act. Planning ahead can make all the difference in ensuring you are ready to meet the winter heating demands. Summer is the perfect time to make plans for next year's heating season. Allied Cooperative offers several options to fit our customer's individual propane needs.

The Guaranteed Price Propane Prepay Program allows you to prepay your propane—guaranteeing the price for your prepaid/contracted gallons will not change from 9/1/22 to 4/30/23. All deliveries during the contract period will be billed to prepay first. The contract price is a fixed-price contract. If the market should fall below the contract price, the contracted price will remain in effect. After April 30th, any unused dollars will be applied to your account for future purchases. (Checks will be issued upon request after April 30th.)

We are also pleased to offer the **Budget Payment Plan**. This program provides the peace of mind of knowing the amount your bill will be ahead of time. The 2022-23 Budget Payment Plan will start in July 2022. There will be a total of 11 monthly payments, due on the 20th of each month. The program is based on your average consumption. The budget payment plan has two options for pricing:

- **Ceiling Price Protection** – Allows you to lock-in your price per gallon for the entire contract year. If the market goes down, your price will go down. If

the market goes up, your price will not exceed the price ceiling you locked-in when you enrolled. This program has a \$100 enrollment fee.

- **Solid Price Protection** – Allows you to lock-in your price per gallon for the entire contract year. If the market goes up or down, your price will remain the same. There is no enrollment fee with this program.

The Scheduled Delivery Program is a computerized system that estimates by history and degree days when a delivery is needed. The truck is then dispatched to your tank when it is between 20-30%. **An 8¢ per gallon discount is given to all customers on this program, that are not already on a contract, due to efficiencies gained.** It is important to note, however, that enrollment in the prepay or budget program does not automatically put you on the Scheduled Delivery Program. Call the office to sign up for Scheduled Delivery.

For more information on these programs or to discuss which will best fit your family's needs and budget, please contact one of our customer service representatives:

Dawn Hanson in Adams at **608-339-3394**;

Angie Kotlarz in Arcadia at **608-323-3311**;

Lisa Powell in Tomah at **608-372-2458**, or

Janita Lee in West Salem at **608-786-1100**. ■

Summer – The Best Time to Buy LP

Summer Fills

You may not be heating your house this summer, but that doesn't mean LP should take a seat on the back burner. Summer is the perfect time to have your tank filled while the market demand is low. In the fall, farmers are grain drying which can cause supply issues. Customers typically get the best price of the year during our "Summer Fill" season, when the overall demand is lower.

If you are a scheduled delivery customer and do not want to have a summer fill, be sure to call the office and let us know.

A Great Time to Switch to Allied!

If you're not already an Allied Cooperative propane customer, now's an excellent time to switch.

Allied has an excellent supply – with us there's no worrying over whether we will have enough propane to meet our customers' needs. And if that's not enough, customers who switch to Allied are eligible for \$75 off their first tank fill.

Propane Powered Summer Fun

We all love the long days and warm nights that summer brings, but is your backyard ready for summer? Pool heaters, outdoor kitchens, generators, outdoor fireplaces, campers and grills . . . they all run on propane. Stop by one of our LP filling stations and make sure your LP bottles are full and ready for all your summer fun!



HOW HIGH CAN IT GO?



By Rich Dahlke, Adams
Grain Location Manager/
Grain Merchandiser

By far the most common question we get (and one I ask myself) is, "how high are commodity prices going to go?" It's a legitimate question. With input costs soaring, we need high commodity prices to maintain margins. Let's try to answer the question ...

As I write this, nearby corn is approaching \$8. May futures touched \$8.20 – the highest price we have seen since the historic drought of 2012. It seems that there is not much to slow it down. The bullish news keeps coming. Planting pace is historically slow. The slowest since 1993. It looks as though the Dakotas and Minnesota, which account for about 20% of our total production, are experiencing the slowest pace ever. As of May 1st we are at about 15% planted. Last year we were over 40% nationwide.

It's important to note that in the years 1993, 1995 and 2013 where corn planting pace was similar to this year, yields ended up being below trend line and below what the USDA was predicting. Today, the USDA is predicting a 4 bushel average increase over last year. That may be a little optimistic based on history.

The March USDA planting intentions have corn acres at 89.5 million acres which is quite low. The Russian conflict looks to be a long and bloody mess. With no real solution in sight the uncertainty will be with us for a while. The Ukrainian Farmer is a very resilient group, but the effect on world feed grain supplies

is real and we can only speculate on how much supply will be destroyed in the Black Sea region. South America's safrina crop is experiencing some dryness as well as in our own backyard. The U.S. drought map looks much more colorful than the last few years.

Uncertainty is the driver, as it is with many market rallies. Currently we are seeing good premiums in the grain markets because of it. When we see aspects of this uncertainty start to go away, prices will moderate. If uncertainty remains and a production problem occurs, eventually a rationing price will have to be discovered. Time will tell, but it is sure to be a historic year for the corn grower. Will the recent run up in corn prices increase corn acreage? I hope so. The world needs it and needs the American Farmer more than ever.

I hate to sound overly bullish. I am normally quite conservative. After 20 years of this, I've seen the most optimistic speculators look like fools because they underestimated the ability of the American farmer and the laws of supply and demand. My takeaway is that I remain cautiously bullish until aspects of the uncertainty start to moderate. A profitable sale today should be looked at as a hedge against a growing U.S. corn acreage and some of the uncertainties mentioned above becoming less important to corn production in 2022 – a truly historic year. ■

Senior Leadership Team Changes

In recent weeks we have had some changes in our leadership team. Dianne Dallmann, former Director of LP, stepped down to pursue a new opportunity in the energy industry. With her departure we have restructured our Energy Division. Jeff Bunker serves as Director of Energy, with LP and refined fuels reporting to him.

After nearly 40 years working in the cooperative system, Ron DeMars announced his retirement as Director of Credit and NAPA. Raymond Murphy, who served as our Loan Officer, has stepped up to serve as Credit Manager. He will continue to manage our loan programs as well. At the same time Adam Judy, who serves as Ace Hardware Manager, will take on the additional responsibilities of overseeing our NAPA stores. ■



JEFF BUNKER
Director of Energy



RAYMOND MURPHY,
Credit Manager



ADAM JUDY,
Ace Hardware
and NAPA Stores
Manager

Get Ready for Tar Spot!



Allan Herritz,
Mauston
Agronomy

We have been hearing about tar spot since it was first discovered in 2015 and all of the yield robbing characteristics that came along with it. How it terminates a crop's life cycle in a matter of days or weeks and has the potential to cut our yield by up to half. We had the opportunity to witness this firsthand in our 2021 growing season and the negative affects this had in our area. We witnessed losses as high as 60 bushel per acre in untreated areas and watched it turn a crop of corn from bright green in color to dead brown in 4 days in the most severely impacted areas. Now is a great time to look at your plan of attack for the 2022 fight against tar spot.

When we look back at our fight against tar spot in 2021, we learned a lot about the disease and how to position ourselves in 2022 to win the fight. First, we learned where the disease came from there were two noticeable characteristics. One, tar spot lesions on the upper half of the corn plant. This we learned was carried into our area with a weather event. Two, tar spot lesions on the lower half of the corn plant this we learned was overwintered in our trade area. So now we know that this disease can and has survived a Wisconsin winter.

We learned early on that a fungicide used at planting either in furrow or 2 x 2, such as Xyway® LFR® and Azteroid® FC 3.3, gave that plant the best foot forward when it came to fighting off early season diseases. This is one of two options we found when it came to fields where we could not get an aerial applicator in to apply a fungicide around the VT timeframe. The second option would be a fungicide sprayed at the V5 time frame; this too gave us great plant health going into mid- to late- summer to fight off tar spot.



Figure 1

We found our greatest return on investment (ROI) against Tar Spot was a fungicide pass partnered with a micro nutrient to help with grain development and a drift agent at or around the VT timeframe with a variety of fungicides such as Approach® Prima, Delaro®, Delaro® Complete, Stratego® YLD and Veltyma™. See the figures shown for the positive outcomes we found on applications in corn.

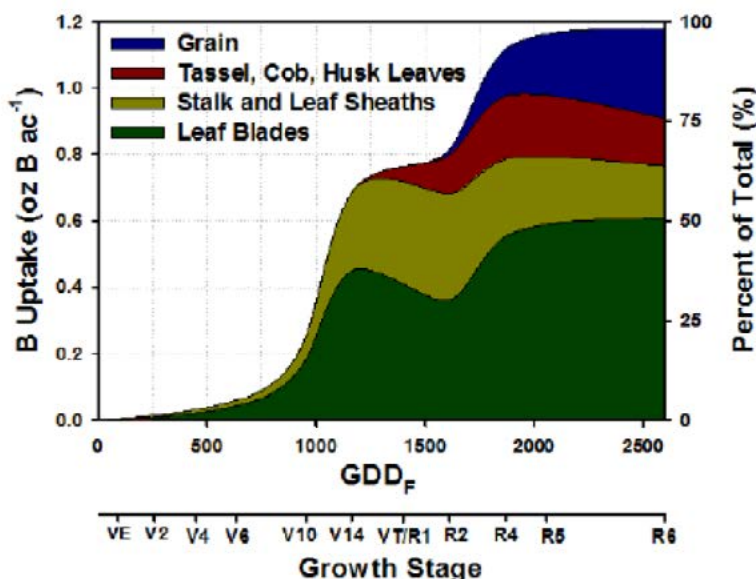
Figure 1 above, was a side-by-side application of Veltyma (7 oz/ac), MAX-IN® Boron (1 qt/ac), and MasterLock® (4 oz/ac) next to a standard check. You can visually see the difference in plant tissue from a drone photo taken several hundred feet above the trial.

Figure 2 (on the following page) shows an application of Veltyma (7 oz/ac), Max-In Boron (1qt/ac) and Masterlock (4 oz/ ac). You can see the color difference between the two treated leaves on the left and right and the non-treated leaf in the center.

Figures 3-5 show an application of Delaro (8 oz/ac), Max-IN Born (1 qt/ac), and MasterLock (4oz/ac). You can see the color and leaf tissue difference where it was not applied next to the tree line. This is also an example of the limitations of an aerial applicator not being able to applicate next to a tree line.

You may ask yourself, why would they apply Max-In Boron at tassel? A large percentage of boron is taken up by a plant in the later part of a corn plant's lifecycle. Boron plays a large role in the reproductive process such as flowering, pollen and tassel development. See the chart on the left for the optimal uptake of boron during the reproductive growth stages.

Now is a great time to look at your plan of attack for the 2022 fight against Tar Spot and other diseases that have the opportunity to impact your yields in 2022. Contact your local Agronomy Advisor to formulate your plan. ■



Source: Bender et al., 2013, Better Crops with Plant Food 94:7-10



Figure 2



Figure 3



Figure 4



Figure 5

Allied's New Certified Crop Advisors



Allied Cooperative congratulates Katie Hale, Pest Pros, and Wrangler Jones, Adams Agronomy, on receiving their Certified Crop Advisor (CCA) certifications. CCA is the benchmark for professional development and expertise in the agronomy industry. To receive this designation, they had to complete a rigorous two part comprehensive exam and have several years of proven experience in the field consulting customers. They join the ranks of 6 other CCA agronomists on our team. We are glad to have such a talented and experienced group of professionals to help you with all of your crop needs.



Transportation

Continued from page 1...



Brian Bye

system. The program pings more frequently than our previous system and is more precise, which allows for better tracking of our fleet. In addition, all of our semi-trucks have tablets which allow them to utilize data from the system to do their log work."

The new program allows the agronomy division to assist in making sure drivers are headed in the right direction, especially when going to application equipment. "The tender trucks have a tracker. We are able to pull up a screen and see where all of our trucks are at the same time. This is very handy as we can determine when someone will be back and when we can send them out to another farmer," added Brian.

We are fortunate to have a talented and dedicated group of drivers that work to keep our products moving. They haul fuel, anhydrous ammonia, liquid fertilizer, dry fertilizer and propane throughout the region. Together they help to ensure our co-op's efficiency and profitability. ■

On The Radar



by Kelly Verhaalen,
Crop Management Specialist
kverhaalen@allied.coop

Allied Cooperative's Pest Pros division is gearing up for the crop scouting and consulting season, as more and more crops are planted across the countryside. Pest Pros works with a variety of crops from vegetable crops to field crops covering approximately 4,200 square miles of Wisconsin's central sands region.

Beginning mid- to late-May, a weekly crop update is generated covering the crop development status as well as current pests, diseases, and timing of supplemental nutrient applications. The publication is titled "On the Radar" and is posted on Fridays on the Allied Cooperative website, as well as the Allied Facebook page.

"On the Radar" consists mostly of photos displaying the current pests, a little information on how to assess a field for the issue at hand, and University of Wisconsin based action thresholds for the pest/disease, if applicable. Crops primarily covered in "On the Radar" are: potatoes, cabbage, carrots, soybeans, and corn.

Pest Pros also monitors moth flights with black-light traps in the Grand Marsh and Hancock regions that have their counts reported in "On the Radar", which is helpful with timing out insecticide sprays for corn, as well as cabbage. Be sure to check out Allied's Facebook page or website to get your weekly crop update! ■

Free Soybean Cyst and Soil Nematode Testing



by Kelsi Mueller,
Pest Pros Lab Manager/
Crop Consultant
kmueller@allied.coop

SCN (soybean cyst nematode) tests every year to every soybean grower in Wisconsin. Wisconsin growers' soybean checkoff dollars and grant money from the WSMB fund this beneficial program.

The tests offer a complete soil nematode analysis to help growers make important decisions such as varietal selection and rotation schedules. Results offer population counts of the SCN eggs

Pest Pros Lab is once again tackling the "Billion Dollar Pest". By partnering with the Wisconsin Soybean Marketing Board and the UW-Madison Extension program, we offer four free



and other plant parasitic nematodes as well as a risk assessment of potential yield damage based on those populations. We offer quick results, usually coming within a week so growers can act fast on potential problems. Professional services are also available to consult on any questions.

These samples can be pulled along with spring or fall fertility samples to make decisions such as variety choice or field locations. Samples can also be pulled during the growing season to troubleshoot problem areas within a field. Talk to Pest Pros about our sampling services! To get your testing kits, including the postage paid packaging to ship the samples, email freescntest@mailplus.wisc.edu. For more information about the testing program you can contact Kelsi Mueller at Pest Pros Lab at kmueller@allied.coop or 608.403.7199. ■

Poly Tank Storage: How reliable are your tanks?

Most farmers have poly tanks all over their farms — on spray rigs, pickups, trailers, or standing next to their machine shed. They are a great solution for liquid storage, but they don't last forever. The lifespan of these polyethylene tanks depends on many things, including thickness and quality of the material and how much ultraviolet sunlight they're exposed to. Sunlight is the greatest enemy of poly tanks. Keep tanks under cover as much as possible to protect them from deterioration caused by UV radiation.

When selecting a poly tank, be sure to choose the right tank for the job.

Vertical flat-bottomed tanks are designed for storage. Flat- or round-bottomed, cylindrical tanks are designed and manufactured specifically for storage. Vertical tanks should be placed on a flat smooth surface.

Horizontal tanks are best for transport. They are designed to be placed on trucks, trailers and



Continued from page 11...

Increasing Yields with Aspire®



All across North America, boron (B) deficiencies are robbing farms of higher yields. In fact, boron is the most common micronutrient deficiency in the world after zinc. Boron is one of eight micronutrients that — when blended in the right proportions with macronutrients — become one of the most important factors to achieving higher yields.

Still, there's a fine line between toxicity and deficiency when it comes to boron. It needs to be applied in smaller amounts than most nutrients, and applied at just the right time. These two factors often lead to boron being applied in amounts that are too small or too large. Typically, boron is mixed with several nutrients in a dry blend. Using this fertilizer type often creates pockets of inconsistent nutrient application: Some areas in a field may have too much boron, others too little.

Aspire® is the only soil-applied product of its kind. Its unique formulation addresses the issue of nutrient pockets by combining two forms of boron with potassium in a single granule. For you, this means uniform nutrient distribution, season-long boron availability and maximum yield.

Aspire combines two forms of boron: quick-releasing sodium borate and a slow-releasing form of calcium borate. These two forms of boron ensure proper nutrition is always within reach during each of the season's key growth periods.

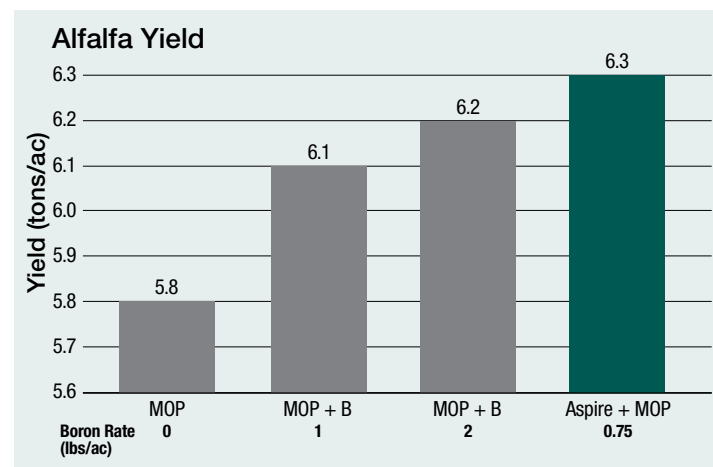
Sodium borate releases quickly and is immediately available to the plant, while calcium borate releases more slowly over the course of the growing season. With the confidence of knowing that boron will be available to the crop all season long, farmers have the option to apply Aspire in the fall or spring. Growers can save valuable pre-planting time with a fall application of potassium (K) with boron (B) to boost yield.

In a recent study, university research found that season-long boron availability is not only important for protecting against loss, but for increased uptake of potassium in plants. The study showed that plants absorbed K rapidly when B supply was adequate throughout the season. However, when B supply was limited, the plant's K uptake capacity was limited. Aspire® with Boron is formulated with two forms of B, along with K, in every granule. Two forms of B give growers the confidence of knowing that boron will be available to their crop all season long.

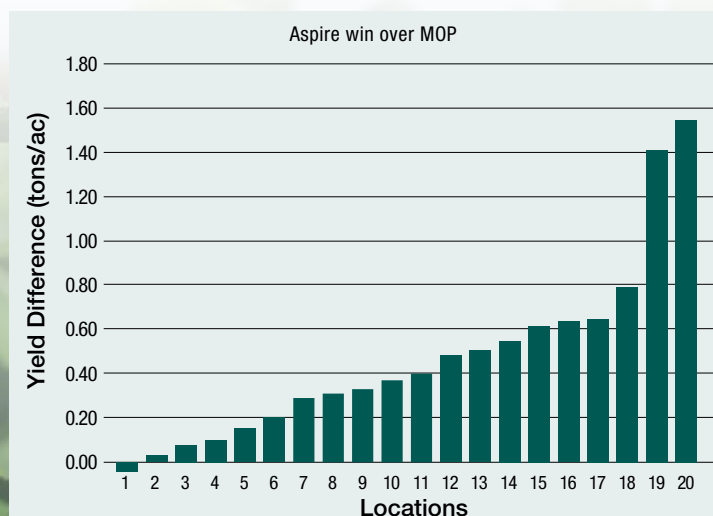
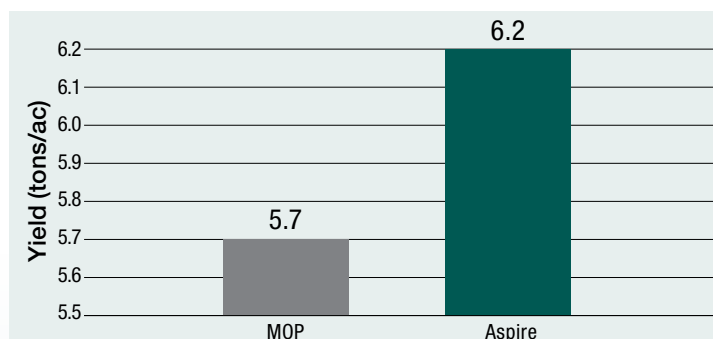
Talk to your agronomy advisor about Aspire. We are excited about the results we are seeing throughout our trade territory with this product. ■

Aspire® Alfalfa Fertility Results

The chart below shows the yield response of Aspire® with Boron (0-0-58-0.5B) compared to MOP (0-0-60) and compares the efficiency of Aspire to MOP – boron



The charts below evaluate the yield response of Aspire® (0-0-58-0.5B) compared to MOP (0-0-60).



DIESEL EXHAUST FLUID

Whether you're a fan or not, diesel exhaust fluid is **DEFinitely** here to stay. So, we should all stock up and be prepared, right?

Not exactly. First there are some things about DEF that need to be considered.

Def deteriorates over time. It has a shelf life of approximately 12 months. So don't buy more than you can use in about a year. Direct sunlight speeds up the deterioration.

DEF can freeze. If left out in the cold DEF can freeze, the good news is, when it thaws out again it is still perfectly fine to use.

DEF is very corrosive. It needs to be stored in clean storage made specifically for DEF. The dispenser also needs to be made specifically for DEF.

To fit your needs better, Allied Cooperative provides DEF in multiple sizes and corresponding dispensing equipment.

- **2.5 gallon jugs.**
- **55 gallon drums.**
Requires a DEF hand pump.
- **275 gallon bulk storage tote.**
Can be filled on site and does require a pump.
- **Larger size storage tanks and heated sheds are available.**

Contact your Energy Specialist:

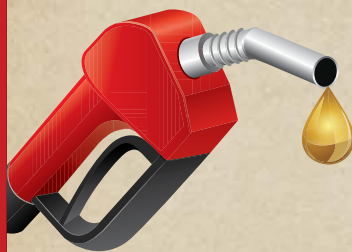


Rich Karpinski
608.403.1178
Tomah Area

Russ Bortz
608.780.8614
Arcadia/West Salem Area



Justin Smith
608.547.9922
Adams Area



How to be More Fuel Efficient this Summer

Hot weather can take its toll on your vehicle, by sapping battery life, increasing tire wear, or even causing your engine to overheat. Regardless of whether your car is properly maintained, a heat wave will have a negative impact on its efficiency. And let's face it, with the price of gas, fuel efficiency is on all of our minds. So, if you're planning to hit the road this summer, here's how to be more fuel efficient the next time the thermometer soars.

Summer Fuel Efficiency

1. Change the oil and oil filter on time. Engine oil has a certain lifespan, as outlined in your owner's manual. When it surpasses the time allotted, it doesn't perform as well, which not only impacts engine durability but may reduce fuel economy. Use the manufacturer's recommended grade and always change the oil filter at the same time. Use this occasion to replace the air filter.

2. Check the tire pressure. Ensure that the tire air pressure is precisely at the manufacturer's recommended PSI. In hot weather, pressure can actually increase, which may do two things: 1) affect fuel economy, and 2) hasten tire wear. If the tires are overinflated, use the pointy side of the tire gauge to release excess air.

3. Use air conditioning wisely. Modern climate control systems are efficient and do a wonderful job of keeping the cabin cool. But they also consume a lot of energy, degrading fuel economy in the process. Park in the shade or away from direct sunlight to keep the car from getting very hot in the first place. If you're driving around town, turn off the air conditioner and roll down the windows. When you take to the highway, close the windows and turn on the AC. The climate control system won't have to work as hard when the cabin isn't hot.

4. Activate cruise control. A steadily traveling car is the most efficient one, regardless of temperature. Drive no higher than the speed limit and turn on cruise control to keep your speed steady. However, turn cruise control off while it's raining or at any time when roads are slick to avoid hydroplaning.

5. Clean the car battery. Corroded car battery terminals cause the alternator to work harder, consuming more fuel. Routinely clean them at least twice annually.

6. Keep the vehicle within load tolerances. Extra weight in a vehicle affects control, which can lead to an accident. Also, every additional 100 pounds of weight results in a corresponding 1 mpg loss in fuel economy.

7. Choose the correct octane. If your vehicle runs on regular-grade gasoline, then use it. In most cases, mid or premium fuel is unnecessary and more expensive. Also, an engine running at higher performance simply consumes more fuel.

8. Stay on paved roads. Taking a shortcut on gravel or unpaved roads might get you where you're going faster. However, the vehicle's wheels must work harder to create forward motion. Rough roads are not only uncomfortable, but they increase vehicle wear and tear while adversely affecting fuel economy.

9. Avoid excess idling. An idling car consumes gas, a habit we're prone to do in the winter to heat the car. On hot days, idling to keep the cabin cool will also devour fuel. If you're stopping for more than a minute, roll down the windows and turn off the vehicle.

Summer is a great time of year to hit the open road! But with the high temperatures, also come higher fuel prices. That's why it's important to learn how to be more fuel efficient so you can make the most of your summer road trips.

Stop by the Adams or Mauston NAPA store for all your automotive parts and supplies.

Poly Tanks

Continued from page 8...

field sprayers. Larger horizontal tanks may have internal plastic baffles to minimize surging of the liquid forward and backward when the vehicle stops or accelerates. They also are equipped with pipe hoops or metal bands to hold the loaded tank in place during transport.

Following are a few tips to help you avoid broken, shattered or leaking tanks and the potential for lost product, costly environmental cleanup, and regulatory fees, as well as the lost revenue and inconvenience of downtime.

- Look for crazings. Crazing — a patchwork of very fine tank wall cracks — is the first sign of deterioration. Take a water-soluble marker and color several 6-by-6-inch areas on the tank wall. Rub the marker off with a rag and look for "crazing." Check for it at the most likely stress points on your tanks. Immediately replace tanks with crazing in the plastic around fittings or use them only for water.

- "Candle" it. Feed a bright light into the tank and look closely from the outside for defects or cracks that show up as different lines or areas of light intensity.

- Do a stress test. Tanks showing signs of UV damage can be further tested (when empty) by hitting it with a baseball bat. A tank in good shape should flex and rebound without breaking. You may have put the tank out of commission, but you'll save having a tank rupture down the road. A weakened tank may be safe for water, but the last thing you want to lose is a tank full of fertilizer on the ground. And you certainly don't want to deal with an environmental spill.

Watch The Shattering Tank (<https://youtu.be/CJQ3wNhZy3k>) video for more helpful details on minimizing the risks associated with poly storage and transport tanks. ■

FINDING THE BALANCE WITH POOL CHEMICALS



by Adam Judy, Ace Hardware & NAPA Manager

Above ground pools have become extremely popular since everyone started spending more time in their own backyard. With it came the complexity of balancing and keeping your pool clean. I wanted to touch base on some specifics and try to simplify the process. There are many products out there that can easily confuse just about anyone about what you need to do to make sure that everyone enjoys swimming in their new pool all summer long. I would break this process up into two categories—balancing and sanitization.

Let's start with balancing...

The 3 main ingredients to keeping a pool balanced are

- PH levels
- Alkalinity levels
- Calcium hardness levels

A good PH level should be between 7.4 and 7.6. If the PH is too low it becomes acidic and if it is too high it is basic water. After buying your pool, PH increaser and PH decrease would be my next purchases. You will be using these throughout the summer to help keep your PH right where it needs to be. There are test strips you can buy for PH balance to let you know when to add. I would recommend testing once a week.

Alkalinity helps the PH balance and should be between 100 ppm to 150 ppm. Alkalinity and



PH are so linked that if your PH is too high and you use "PH decrease" it will also take care of you alkalinity. There is an alkalinity increase product on the market, but there is not an alkalinity decrease product, due to PH decrease taking care of this.

Calcium hardness levels should be between 175ppm to 300ppm. If it is too low, the plastic in the pool will start to break down, and if it is too high you will have calcium deposits.

Now sanitization...

Chlorine is the most popular liquid used for sanitization of pools. Chlorine levels should be between 2 and 3 ppm. Once the chlorine has killed the bacteria it becomes neutral and will not kill any more bacteria in the pool. This causes the dead organic material to remain in the pool. This is when you should shock your pool.

Shocking the pool will use the sun rays to break up the organic material and clear the water. After this, you simply need to make sure that you have good circulation and filtering. Skimming and vacuuming will help to get whatever is left out of the pool. There are test strips for all that I mentioned above, in fact, a lot of the test strips can be scanned by your phone and they will let you know exactly what you need to do to keep your pool swim friendly.

Be sure to stop by Ace Hardware in West Salem or the Mauston NAPA store for all of your pool chemicals and supplies.

Have a great summer! ■



TAKE \$5⁰⁰ OFF

YOUR PURCHASE OF \$25⁰⁰ OR MORE!

COUPON MUST BE PRESENTED AT TIME OF PURCHASE. NO PHOTO COPIES ACCEPTABLE.



Coupon expires 8/31/2022

Offer valid only at the following Allied Cooperative locations: Ace Hardware in West Salem, WI; NAPA Auto Parts in Adams, WI and Mauston, WI; and Tornah Country Store, Tornah, WI (excludes all feed). One coupon per customer. Photo copies not acceptable. May not be combined with other offers.



allied.coop

P.O. Box 729 • Adams, WI 53910



ONLINE BILL PAY COMING SOON!

Allied Cooperative is pleased to announce that customers will soon be able to order propane and pay your Allied Cooperative bills online with credit card (fees will apply) or ACH (no fee). Watch our website and your mailbox for more information!

CALENDAR PHOTO CONTEST

Allied Cooperative invites you to enter our 2023 Calendar Photo Contest! We are looking for striking digital images of local scenery, agriculture and nature, throughout all four seasons, to be used in our next calendar. Winners will receive a \$30.00 Allied Cooperative gift certificate and plenty of bragging rights. Please submit your high quality digital photos, as well as your name and contact information, via email to info@allied.coop. Contest deadline is August 10, 2022.



BOARD REPORT



John Vehrenkamp,
Board Chairman

What a spring it has been! I hope you were able to get your crops in and are prepared for an excellent growing season.

I would like to invite all members to our annual meeting which will be held on June 28th at the Cranberry Country Lodge in Tomah. The meeting starts at 11:00 a.m. Voting members have been mailed a formal invitation along with ballot information for our Board of Directors election. We would appreciate it if you would take the time to vote. We need your votes to make our election official.

Finally, I would like to thank Ron DeMars for his many years of service to our co-op. Ron recently announced his retirement after almost 40 years working in the cooperative system and almost 20 with our co-op. As Director of Credit he had a most difficult job, but he worked hard to protect our co-op and did an excellent job. Ron's retirement is our loss, but a well-deserved respite for him. We all wish him the very best.

Enjoy your summer and remember to take some time for the most important things in life!

EMPLOYMENT OPPORTUNITIES

As a large cooperative with five divisions and multiple locations, Allied Cooperative employs a diverse staff in a number of different career fields. If you are interested in joining the Allied Cooperative team, please visit our website at www.allied.coop. There you will find a list of current job openings and an application. We look forward to hearing from you!

Allied Cooperative's employees play an important role in our success as a cooperative. As a cooperative, our core values are teamwork, integrity, dependability, efficiency and service to others. If your values match ours, we'd love to talk to you about career opportunities with our co-op. Come see what Allied can do for you!

For an up-to-date list of openings visit www.allied.coop/careers. For more information on any of these openings call (608) 339-3394 or email jobs@allied.coop.

ANNUAL MEETING

Allied Cooperative invites all members to attend our 2022 Annual Meeting on Tuesday, June 28th at 11:00 a.m. It's at the Cranberry Country Lodge, 319 Wittig Rd., Tomah, WI. For more information, email info@allied.coop.

