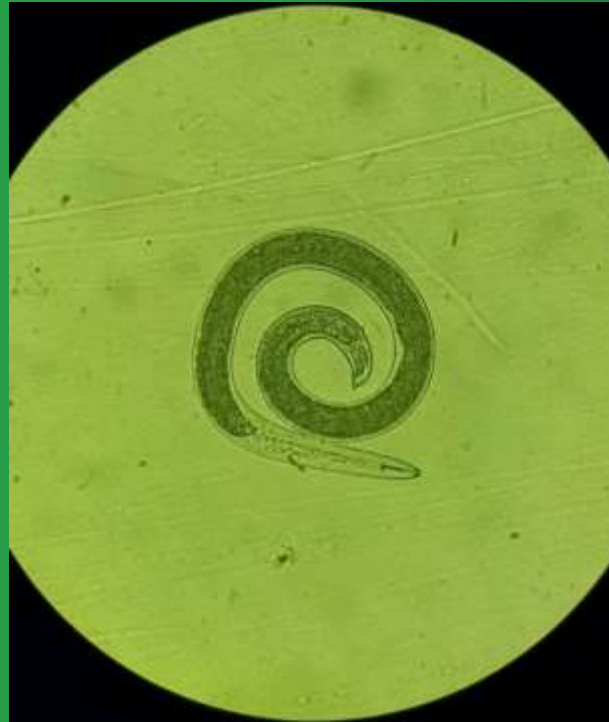


Nematode Testing Made Easy



Nematode Testing Made Easy

It's just digging holes in the ground but there are important points to consider in order to ensure accurate results.

The following slides will help you through the process

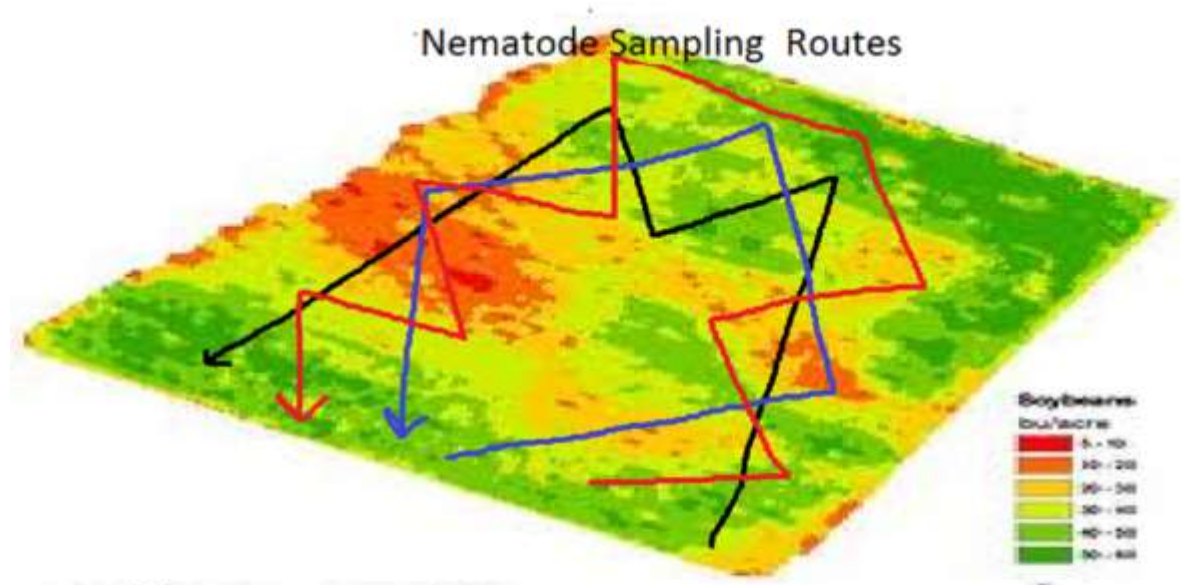
Important Points to Consider

- Sample at the proper time
- Have the right tools
- Take 15-25 samples/composite
- Keep the samples moist and cool
- Complete [our submission form](#)
- Submit immediately but not late in the week

When to Sample

- Sample for nematodes at late vegetative to early reproductive stages.
 - In Wisconsin, this is generally mid-June to early August.
- Why?
 - This is when plant parasitic nematodes will be at their highest, most active population levels.

Sampling Routes: Don't agonize over it



Take a minimum of 25 subsamples per field, or one subsample per acre to make a composite.

Just ensure that you get a representative composite

Troubleshooting



The Tools

- Bucket
- Soil probe or shovel
- Quart size zip-lock bags
 - Do not allow the sample to dry out
- Ice chest (always keep the samples cool)
- Sample submission form
 - [Click here for the Sample Submission Form](#)
 - Or go to allied.coop → Agronomy → Pest Pros → Nematode Lab → **“Nematode Submission Checklist”**



Use a soil probe or shovel to sample plants

With a probe sample between plants






**Or, if you're
using a shovel,
target 4-6" from
plants**



Expose the
moist, cool soil
that is 4-6" deep



Grab a small hand-full of soil and roots at each location and composite with the other sample locations.

1. Shovel method allows a soil and root test to be done.
2. Probe method allows only a soil test.



GROWER
FIELD - SECTION
CROP
DATE

"PROPER" BAG
LABELING

STORE BELOW 50°F



Plainfield Farms
 P.O. Box 123
 Plainfield, WI 54966

10/1/2012

Nematode Report

Sample ID	Sample Date	Crop	Lesion GRDW	Nematodes/Per 100CC			Other	Risk
				Lesion	Dagger	Lance		
Plainfield Farms:								
1-1	7/2012	Corn	420				79St	MH
3	7/2012	Corn	60				799St,199Sj	MH
Poor Comp 3-2	7/2012	Corn	0	6	60			M
Ck#1	7/2012	Corn	75	64	204		75St	MH
Good	7/2012	Corn	0				72Sp	L
Gehm 1	7/2012	Corn	81				18Sp	L
No Grass 1	7/2012	Corn	55				187Sp	LM
1 Good	7/2012	Corn	22	11			55Sp	LM
1 Poor	7/2012	Corn	44				198Sp	LM
Bruce B1	7/2012	Corn	0	320	20		420Sp	VH
206666-#2	7/2012	Corn	20				640St,100Sj	M
206666-#3	7/2012	Corn	11	44			560St	M

The recommendations made are based solely on the test results. Errors in sampling or sample handling can have a major impact on the results of the test. Care must be taken to insure that a representative sample is taken at the proper time, is well mixed, and is properly stored prior to submission. Pest Pros assumes no liability for recommendations made, which are intended as a management guide only.

Expect a report in < 7days with a Risk Rating



Feel free to call us if you
have any questions

Randy Van Haren, Pest Pros Manager (cell) 608-572-0248

Andrew Pape, Pest Management Specialist (cell) 715-935-0796

Wendy Goman, Lab Manager (office) 715-335-4046