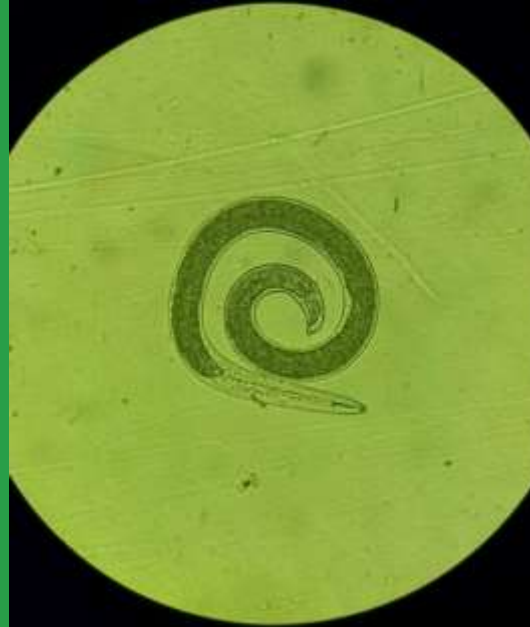


Universal Row Crop Nematode Assay



Questions to Ask Yourself

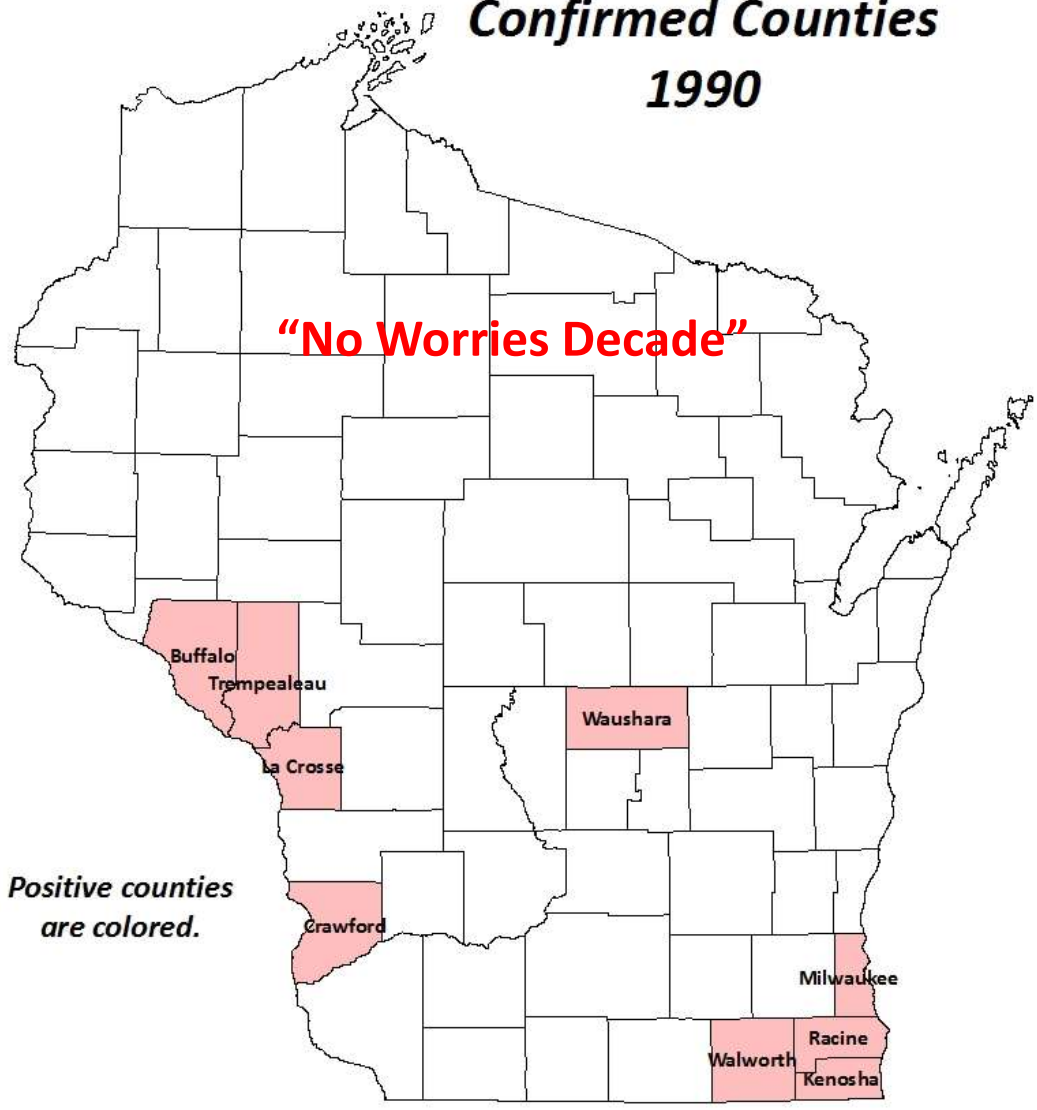
- Do you plant SCN resistant hybrids?
 - How is it performing? Yield? SCN numbers?
- Will your fields respond to new seed treatments?
 - Votivo? Avicta? Clariva?
 - Have you used these and not seen a response?
- Do you test for nematodes? Why not?
 - Can you manage what you don't measure?

What is the Universal Row Crop Nematode Assay?

- A dual purpose nematode sampling and test regime that targets the soybean crop in the rotation in order to assess both soybean cyst nematode (SCN) and the other plant parasitic forms that can attack subsequent crops.



Soybean Cyst Nematode Confirmed Counties 1990



*Positive counties
are colored.*

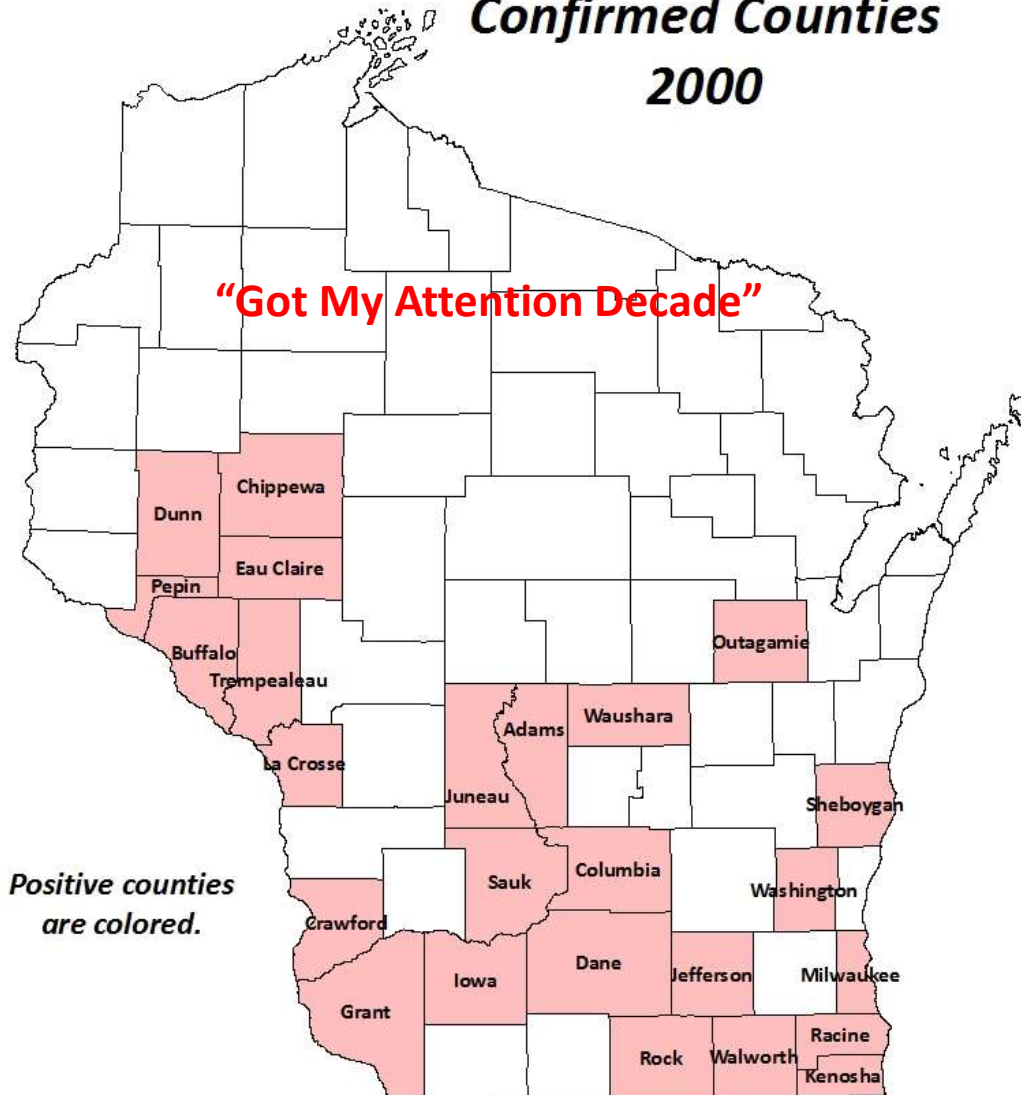
Combined DATCP and UW data

Wisconsin Department of Agriculture, Trade and Consumer Protection





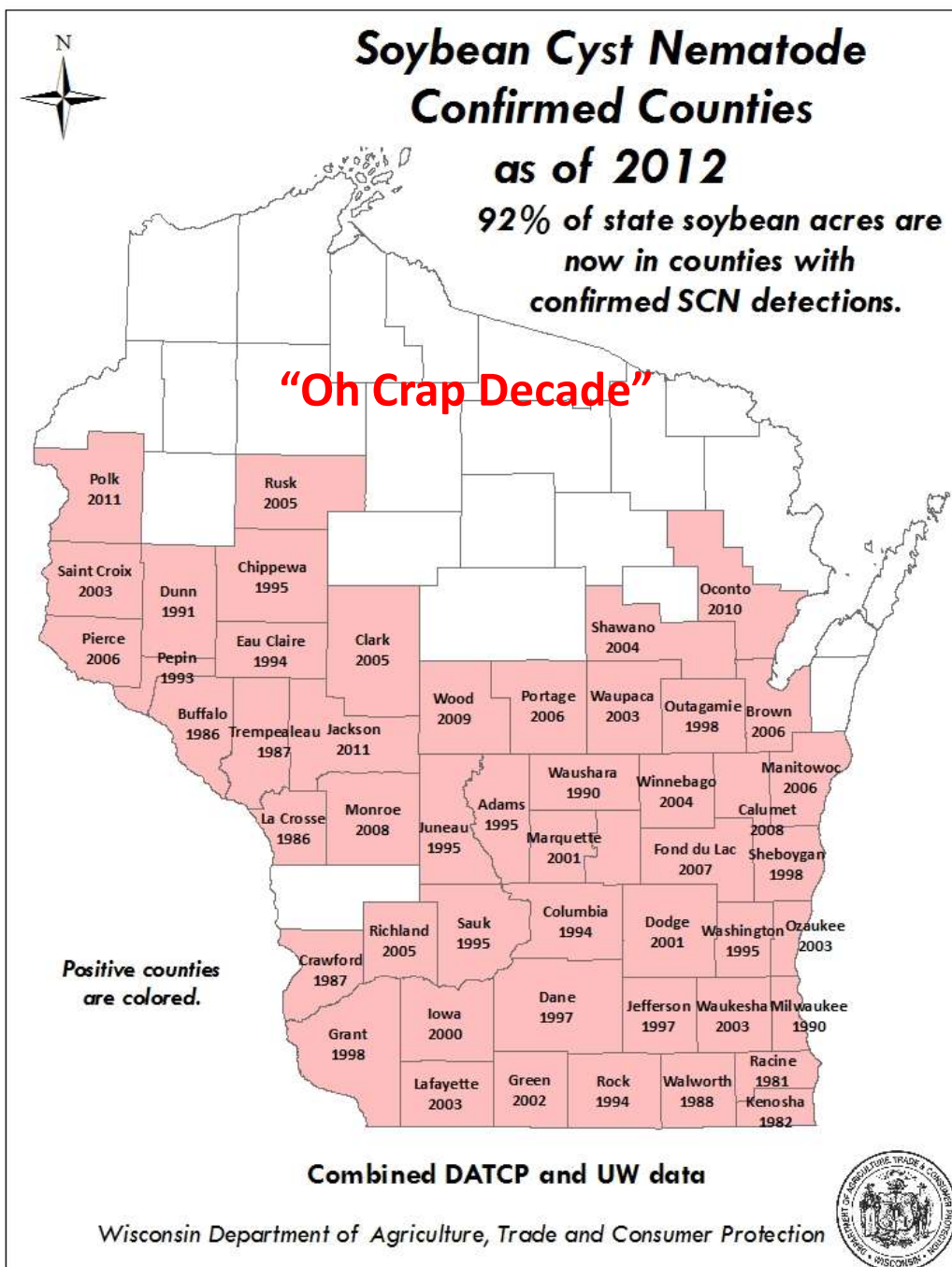
Soybean Cyst Nematode Confirmed Counties 2000



Combined DATCP and UW data

Wisconsin Department of Agriculture, Trade and Consumer Protection





Combined DATCP and UW data

Wisconsin Department of Agriculture, Trade and Consumer Protection





Benefits of the Universal Row Crop Nematode Assay

- Quick results: usually 1 week
- Mid-season test provides superior results.
- One test on Soybeans for SCN & other nematodes allows you to assess hybrid SCN performance and rotational risks.
- Sampling services and follow-up advisory are available.

Why it Works

- Most plant parasitic nematodes have a wide host range.
- Soybean Cyst Nematode larval forms will be **present even on “resistant” soybean hybrids.**
- Sampling at V6-R3 allows time for plant parasitic nematode populations to develop.

How to Get it Done

- Call us before or at V6 to confirm planting dates and to schedule sampling.
 - Growers or their agronomists may conduct their own sampling. We are available to discuss these results further and plan for the subsequent crop.
- Fill out our [Sample Submission Form](#)

Universal Row Crop Nematode Assay

Manage SCN Resistant Hybrids

Assess Impacts of Rotation and Management on SCN Populations

Plan for other Nematode Impacts on Subsequent Crops & Initiate Management.

Minimize the intensity of Nematode Testing required. Replaces SCN egg test.